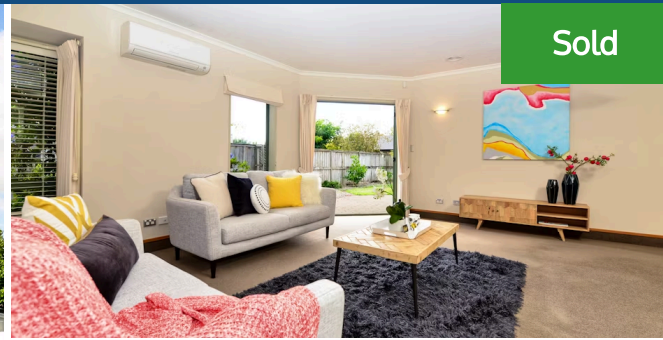




📍 26 Huntington Drive, Huntington



AUCTION BOUGHT FORWARD to Wednesday 18 March



Land area	672 m <sup>2</sup>
Rateable value	\$700,000
Rates	\$3,570.05

Positioned in the heart of an eminently popular and convenient part of the city, this enchanting home will attract interest from a wide range of prospective purchasers, including families, empty nesters looking to downsize - anyone looking to reside in this popular suburb. Inside, three bedrooms provide ample accommodation, with the master accompanied by two walk-in robes and an ensuite. The hub of the home is the light-filled open-plan living area, with an extra separate living space, which enjoys excellent indoor/outdoor flow and seamless access to the large kitchen. Although thoroughly charming as-is, there is undeniable potential to stamp your own mark on the home, refreshing the decor and adding value to your investment in the process. Established gardens create an idyllic setting for alfresco entertaining, with the peace and tranquility of the location providing a welcome respite from the rigors of modern life. Easy-care in nature, the section was conceived to minimise upkeep and maximise leisure time, while the double, internal access garage contributes further practicality. There is also an extra large garden shed for all of those extra toys. In terms of location, things couldn't be more convenient, Chartwell Shopping Centre is nearby, as is the medical centre, the Chartwell library and a host of key amenities. There is a raft of quality cafes and a cinema. The super-convenient location, combined with the easy-care nature of this well-maintained home, means interest is sure to be high. There's no time to waste - contact me now for more information.



Heather Whyte

📞 07 855 0550

📱 027 239 2751

✉️ heather.whyte@lugtons.co.nz