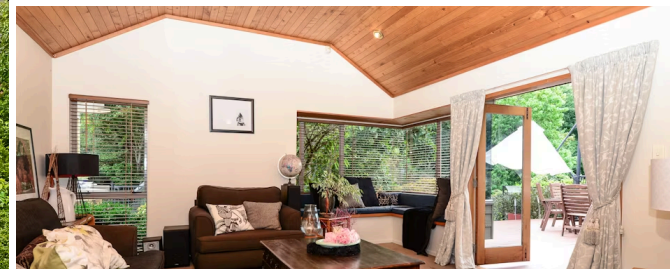




Sold



10 Landell Place, Harrowfield

3 2

Vendors Committed Elsewhere

Land area 1300 m<sup>2</sup>  
Floor size 223 m<sup>2</sup>

Properties like this don't come onto the market very often. Hidden on a gorgeous 1300 m<sup>2</sup> park-like- setting, this is an excellent opportunity for astute purchasers to move into the exclusive community of Harrowfield. Located off a cul-de-sac and close to river walks, this 1990's two storey jewel offers space, style, function and flexibility. Boasting three large double bedrooms (with scope for a 4th ) 2 bathrooms, two spacious living areas plus dining, this idyllic family retreat with a well-appointed kitchen sits in coveted school zoning. This delightfully unique home with neutral colour pallet features eye-catching timber ceilings and separate dining with mood lighting and a kitchen hub that serves out to a large breakfast bar. Added features include built-in bay window seating, two skylights, separate laundry and double internal access garage with ample closed shelving storage. Stay warm and comfortable all year round with a choice of a fire or 3 heat pumps. Extensive bi-fold doors open up to impressive large deck with LED lights, water feature and gully views. The partitioned external areas are superb for alfresco entertaining with green vistas and even space for a pet zone if desired. 10 Landell Place is in highly desirable Hamilton location, close to river trails, and Day Park. Only minutes by car to Chartwell Square, Flagstaff, Rototuna and the Base Te Awa shopping centres. Zoned for decile 10 Haukanui Primary School, and handy to Waikato Dio and St Pauls. If you want an enchanting country feel, in a secluded city location, this is a MUST SEE waiting to be discovered. To view, don't delay, contact Diana and ken 0274939950 today

