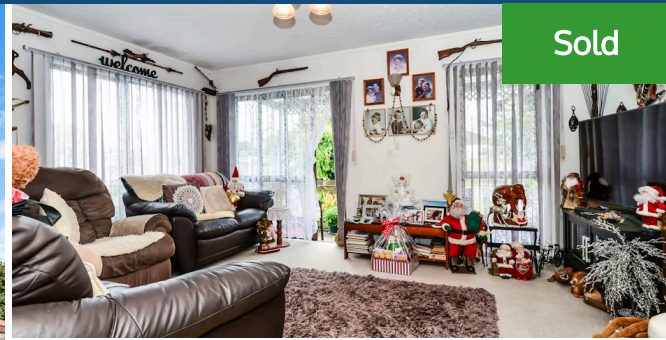




📍 23 Jasmine Avenue, Dinsdale



Welcome to 23 Jasmine Avenue. . . on the market for the first time in 26 years. This is a great start to either home ownership or investment, or those starting retirement and wanting to simplify life. There's 3 good sized bedrooms, a great "cave" for the hobbiest, a 1.5 garage and a carport too. If you've been wanting to secure your spot in close proximity to the Dinsdale shopping hub, bus stops, Schools and parks. . . This ticks those boxes off. Video Clip here: https://drive.google.com/drive/folders/1syFZbUHWPEwk_08QdB75vWGXPp7bYyod?usp=sharing The 1980s are alive and well here so the makeover options are yours for the picking. Our current owners have enjoyed this corner site since 1994 and say that once they arrived. . . they've not wanted to leave - the aspect is perfect for anyone who loves to watch the world go by. A motorhome or caravan? - there is a second entrance to the section. Zoned for Frankton, and Koromatua Primary Schools, Maeroa Intermediate and Fraser High - great schools to choose from. The importance of a great location never changes. . . and you've found it here. Make sure you don't let this one get away. Call Lisa Sigley on 021722281 to view. www.lisasigley.com

COPY AND PASTE THIS LINK FOR THE PROPERTY FILES: <https://drive.google.com/drive/folders/11qGGPt9quU6sZ0TTVYMfY2aCMFOf8Q9u?usp=sharing>



Lisa Sigley

📞 07 838 3800

📱 021 722 281

✉ lisa.sigley@lugtons.co.nz

🌐 <https://www.lisasigley.com/>



Land area	631 m ²
Floor size	114 m ²
Rateable value	\$460,000
Rates	\$2,560.00

