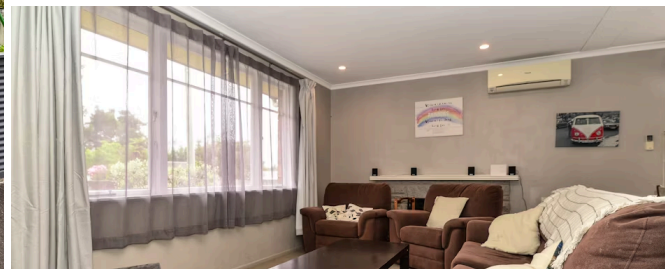




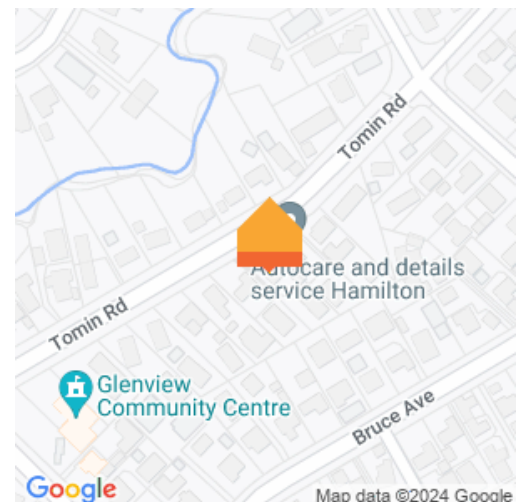
📍 28 Tomin Road, Glenview



🛏 4 🚿 2 🚗

In the heart of Glenview, central to everything the area has to offer, this solid brick home is an awesome investment. Well suited to family life, it has four bedrooms, including a master with an ensuite, and a light-filled social open-plan that brings everyone together for day-to-day living. Kitchen, laundry and bathrooms are modern, clean cut spaces and there is good separation between active and sleep zones. The master suite occupies a peaceful, private retreat at the rear of the home. New life has been breathed into the interior, which has feel-good air and bright disposition. Presentation throughout shows pride of ownership. The well-established 558sqm freehold section has trim flat lawn areas ideal for outdoor play. It is fenced and gated for full containment. A cobbled driveway paves the way to the large single garage at the rear containing ample workshop and storage space. Glenview's proximity to Waikato Hospital and the CBD make it highly favoured among hospital and city workers. The family-friendly suburb has a great community spirit and is well supported by a full range of urban amenities. Glenview Park Kindy and local dairy are just around the corner, and the supermarket and main shopping centre are a short walk.

| | |
|-----------------------|--------------------|
| Land area | 558 m ² |
| Rateable value | \$510,000 |
| Rates | \$2,709.39 |



Babak Paymani

📞 07 855 0550

📱 027 405 1416

✉️ babak.paymani@lugtons.co.nz