



Sold

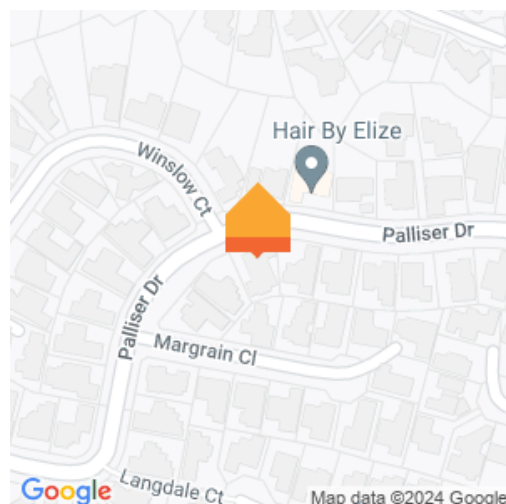


📍 46 Palliser Drive, Huntington

🛏 4 🚗 2 🚤 3 🚲

Your quality Huntington home is a sanctuary of space and comfort, brilliantly appointed to cater to a large or extended family. The generous 275sqm interior layout incorporates four bedrooms, two of which have ensuite bathrooms, ensuring loads of personal space. Living areas are in a good supply. Your formal lounge eases off the entrance and the open living zone gives your family room to kick back and relax. Indoor and outdoor spaces are seamlessly melded, making it easy for your family to enjoy an alfresco lifestyle and entertain guests. The host's space serves up excellent functionality for family life with a central island, a full array of appliances and a walk-in pantry. Dining and lounge areas bookend your sleek kitchen which overlooks the portico and large, rear courtyard. Bathroom and ensuite are well-appointed and the laundry is separate. Triple car garaging comes with handy drive-through access to the backyard. There is parking for the likes of a trailer, jet ski or a boat. When it comes to everyday comfort, your home has it covered, thanks to five heat pumps, underfloor heating and HRV.

Land area	720 m ²
Floor size	276 m ²
Rates	\$5,084.99



Wei Sen Chow

☎ 07 838 3800
 📱 027 455 4477
 ✉ weisen.chow@lugtons.co.nz
 🌐 <https://www.weisenchow.co.nz/>



Richard Hartles

☎ 07 838 3800
 📱 027 3693 001
 ✉ richard.hartles@lugtons.co.nz
 🌐 <https://www.weisenchow.co.nz/>