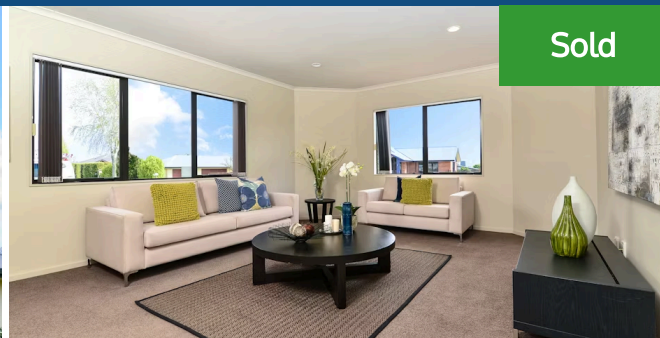


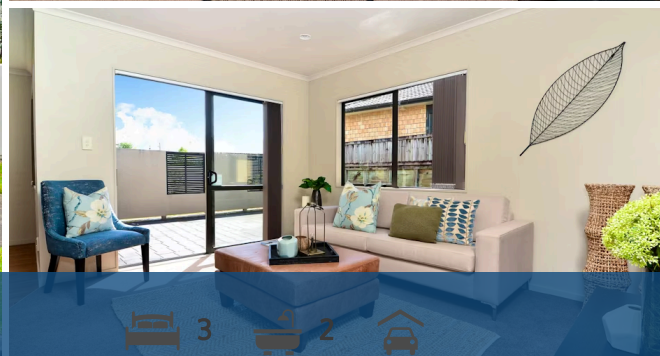


15 Farleigh Close, Huntington

Single level and in a great spot for to access all northern Hamilton has to offer, this home is ready to welcome a new owner. Offering easy care living in a family-friendly cul-de-sac with access ways to schools, reserves, and is walking distance to the Rototuna town centre. The kitchen integrates with meals and casual living to deliver a sun-soaked, convivial area opening to the courtyard and grounds. There is a separate lounge, and three bedrooms, including a fully-appointed master. Both lounge and master bedroom link with the outdoors for seamless indoor-outdoor living with the private court yard. Constructed in hebel concrete (aerated concrete) with internal access double garaging, good storage and an alarm for extra security. Zoned for Rototuna Primary and Rototuna Junior and Senior High Schools, plus easy access to Wairere Drive from Gordonton Road. Call now to view!



Sold



Land area	533 m ²
Floor size	175 m ²
Rateable value	\$540,000
Rates	\$3,309.73

