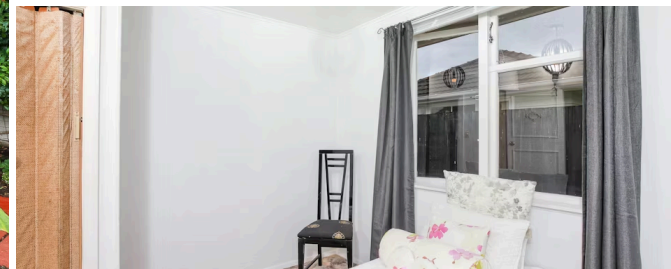


Sold

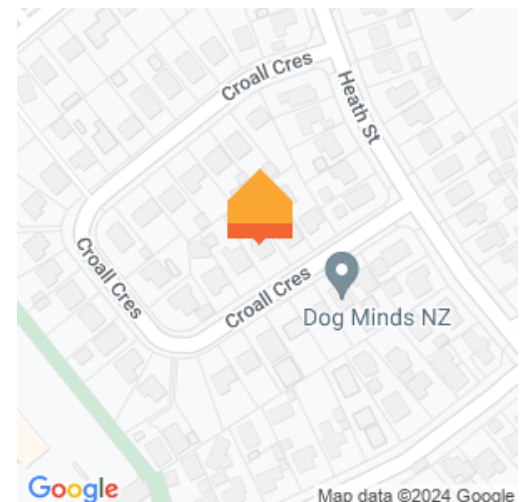


8 Croall Crescent, St Andrews

2 1 1

Occupying a desirable 745sqm parcel of land rests this unique property that will appeal to a diverse range of home buyers with a highly functional and versatile floorplan from indoors to out. Positioned in the sought-after suburb of St Andrews, step outside to enjoy the St Andrews Golf Club, or a walk along the River. The light filled kitchen is practical in design with the dining area adjacent. Large open living areas boast original character features, gas heater for comfort through the winter months and a built-in bar for the entertainer. Two great sized bedrooms are accompanied by a family bathroom. Two separately placed external rooms could be utilised as teenager retreats, home offices or space for relatives and visitors to stay. This man cave dream contains 8 car garaging. Wow what a treat! The double garage leads to a huge workshop at the rear, ideal for the handyman, mechanic, or car enthusiast plus many more options to fill this expansive area. The backyard is sure to please with a covered entertaining deck and private level lawns bound by established gardens. Securely fenced, the front lawn is a great space for kids to play plus ample off-street parking, this home has so much to offer and must be seen to grasp this unique opportunity in the fabulous St Andrews locale. Call Chip or Rose direct today on 07 855 0550.

Land area 745 m²
Rateable value \$480,000
Rates \$2,528.08



Chip Humble

☎ 07 855 7510

📞 0274 752 349

✉ chip.humble@lugtons.co.nz