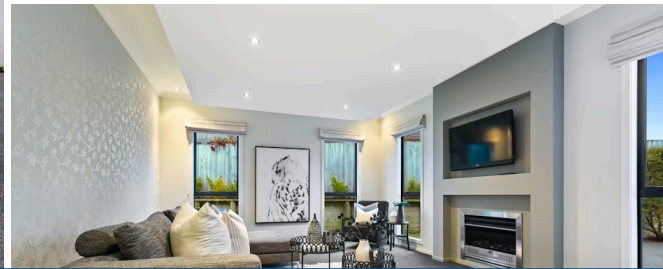




Sold

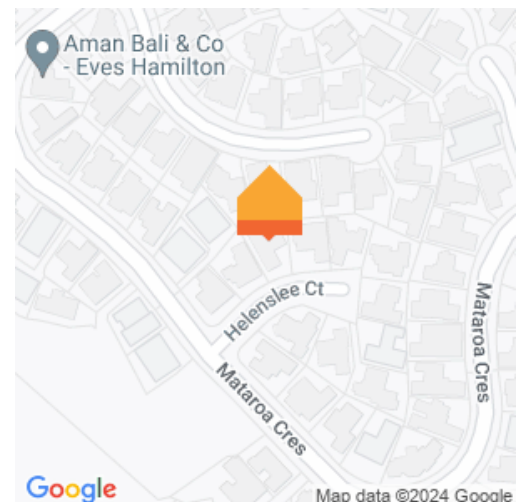


5 Helenslee Court, Flagstaff

5 Bedrooms 2 Bathrooms 2 Car Spaces

Modern design, your home has everything you could ask for when it comes to large family living. Clean contemporary mono pitch architecture constructed of Aeriated concrete panels gives a stylish modern look and the generous interior serves up multi-use space, a hearty suite of five bedrooms, and superb indoor-outdoor living that greatly enhances your options for social gatherings. Carefully lived in and offered to the market for the first time since it was constructed in 2014 by Kiwi Built Homes, your well-maintained, double-glazed executive home is a quality offer full of creature comforts, including an HRV system with a summer kit, underfloor heating in tiled areas, gas hot water and the convenience of central vac. The layout is effortlessly functional and very appealing to entertainers. Your sleek stone-top kitchen dishes up a scullery and a 900mm pyrolytic F&P cooker that will bring out the baker in the family. There's ample room for social interaction and break out space for quiet relaxation. Your lounge is ideal for movie nights and its gas fireplace wraps everyone in winter warmth. Bi-fold doors onto the private patio open the home to an effortless alfresco lifestyle from both living areas.

Land area 686 m²
Rateable value \$980,000
Rates \$5,095.63



Wei Sen Chow

07 838 3800
 027 455 4477
weisen.chow@lugtons.co.nz
<https://www.weisenchow.co.nz/>



Richard Hartles

07 838 3800
 027 3693 001
richard.hartles@lugtons.co.nz
<https://www.weisenchow.co.nz/>