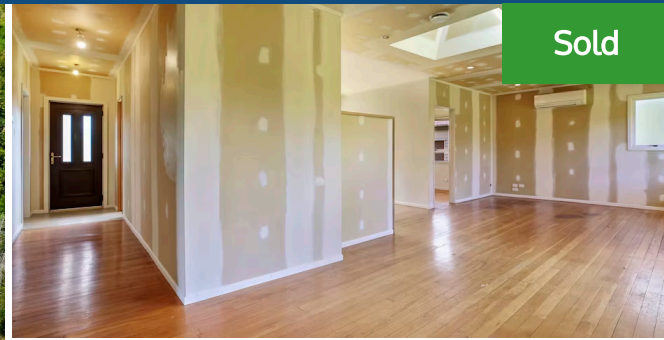




## 6 Marshmeadow Road, Newstead



A work in progress, this renovation is waiting for new hands to take it to completion. Keen eyes will see a good family prospect here, with the weatherboard home on a generous 1012sqm lying just outside of the city. Its location, off State Highway 26, is close to Newstead Model Country School, minutes from Hillcrest and Silverdale, and enroute to Morrinsville and coastal destinations. Zoning is for Hillcrest schools. Meanwhile, work is needed to finish the home. Kitchen, heat pumps and solar panels are installed. The open plan sits on a polished timber floor and is infused with natural light thanks to a skylight window and a large, ranch slider that spills onto a deck. Two of the three bedrooms access their own deck. There is a decent sized laundry with a toilet and one bathroom. Three garages and a workshop will appeal to tradies and home handypeople. Mature trees adorn the large section land where there is ample room for kids to run about and scope for gardeners to enhance.



Land area	1012 m <sup>2</sup>
Floor size	203 m <sup>2</sup>
Rates	\$2,545.00



### Terry Ryan

☎ 07 855 0550

📱 021 909 978

✉ [terry.ryan@lugtons.co.nz](mailto:terry.ryan@lugtons.co.nz)

🌐 <http://www.terryryan.co.nz/>

