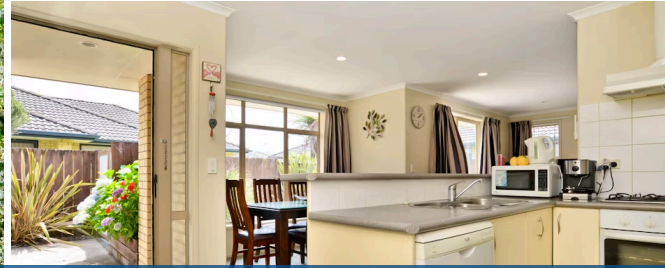




📍 221 Old Farm Road, Hamilton East



3 bedrooms 1 car 1 bathroom 1 garage

An outstanding offering in terms of location and easy-care living, this well-tended property is as neat as a pin. Tucked away in a landscaped environment on a compact, secure section at the end of a driveway, the north-facing home features sunny outdoor living areas, three bedrooms, a bright open plan layout, comfortable lounge with heat pump, and internal access double garaging plus external parking. With dual access ensuite and a 2nd toilet for guests. Also fantastic home security system that will be staying. Offering great choices in schools and close proximity to university, the property nestles with long-term neighbours, close to Ruakura industries, transport and sports grounds. Call me to view as this property won't last long - 027 239 2751 or Nicky Miles on 021 924 430.

Land area	428 m ²
Floor size	130 m ²
Rateable value	\$560,000
Rates	\$2,576.06



Heather Whyte

📞 07 855 0550

📱 027 239 2751

✉️ heather.whyte@lugtons.co.nz

