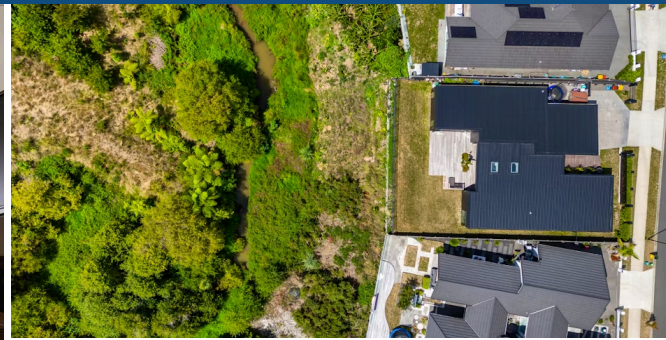




📍 127 Te Huia Drive, Flagstaff



You know there's something special in store for you at this contemporary haven where the dialogue between landscape and architecture is articulated in a dynamic way, and light, space and outlook are clearly top of mind. Drawing inspiration from its surroundings, your luxe residence plays with the framing of space, views, and outdoor settings to perfection. It has an incredibly relaxing vibe and delivers a heightened connection to 'place'. Swathes of double glazing accentuate a love for light and the great outdoors, while vistas of Lake Magellan and the natural environment enhance the interior design and elevate your indoor-outdoor living experience. Lofty, high stud living areas have a bright, uplifting aesthetic and room configurations allow family members to stay connected yet still enjoy their own space. Your spacious portico and deck seamlessly blend the interior with the outdoors ensuring no demarcation between inside and out. These outdoor entertaining rooms are a huge drawcard for everyday living and are accessible from your open plan domain, separate lounge, and main bedroom suite. A sleek, up-to-the-minute kitchen takes command of the open plan. It embraces form and function and has a well-equipped scullery to keep your beautiful 'on show' kitchen clutter-free.

Land area	729 m ²
Floor size	265 m ²
Rates	\$6,473.00



Wei Sen Chow

📞 07 838 3800
 📱 027 455 4477
 ✉️ weisen.chow@lugtons.co.nz
 🌐 <https://www.weisenchow.co.nz/>



Richard Hartles

📞 07 838 3800
 📱 027 3693 001
 ✉️ richard.hartles@lugtons.co.nz
 🌐 <https://www.weisenchow.co.nz/>