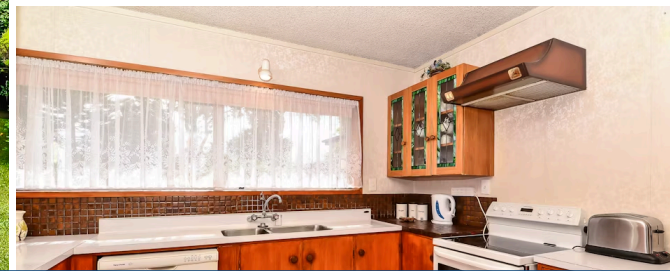




Sold



📍 203A Peachgrove Road, Claudelands

🛏 2 🚗 1

It's all about convenience, location and affordability which this home has in spades. Perfectly positioned back off the road, opposite Southwell School, also enjoying Boys/Girls High zoning with a bus-stop at your door-step. An easy stroll in both directions to Countdown and a variety of shops & cafe's in the 5 x roads precinct. Situated on a well fenced private easy-care section with just enough room for gardens and fruit trees. Spacious living and generous kitchen plus two double bedroom and separate office with potential to add your own personal touch. Ideal retirement home or investment in a central location with attached garaging and ample off road parking. Vacant possession so call today for a private viewing.

Rateable value	\$425,000
Rates	\$2,271.85



Terry Ryan

📞 07 855 0550

📱 021 909 978

✉ terry.ryan@lugtons.co.nz

🌐 <http://www.terryryan.co.nz/>

