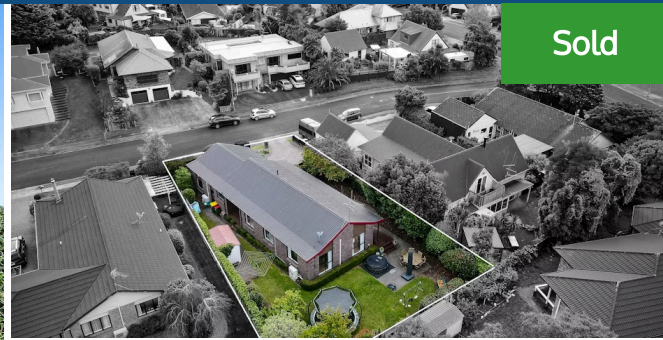




5 Willowfield Place, Pukete

Welcome to 5 Willowfield Place, nestled in the heart of Pukete. This delightful home offers the perfect blend of comfort and convenience, with a location that caters to every lifestyle need in this cul-de-sac off Delamare Road. Step into the welcoming embrace of this home's spacious interior. The centre piece of this abode is the expansive open plan living area, whether it's hosting gatherings or simply enjoying quiet moments of relaxation, this versatile space offers endless possibilities. Boasting three spacious double bedrooms complemented by ducted central air conditioning, ensuring year-round comfort. Convenience meets security with an internal access double garage and fully fenced section, offering peace of mind for families and pet owners alike. Step into the backyard oasis, where established plantings create a serene backdrop for outdoor gatherings and quiet moments of reflection. There's a perfect place for a spa pool - as the vendors will be taking theirs. Nestled on a quiet street, this charming home offers the perfect blend of privacy and accessibility. Enjoy leisurely strolls along nearby river walks or unwind at the beloved Cinnamon Cafe, both just moments away.



Sold



Land area	665 m ²
Floor size	180 m ²
Rates	\$3,917.15






Terry Ryan

 07 855 0550
 021 909 978
 terry.ryan@lugtons.co.nz
 <http://www.terryryan.co.nz/>



Heather Whyte

 07 855 0550
 027 239 2751
 heather.whyte@lugtons.co.nz