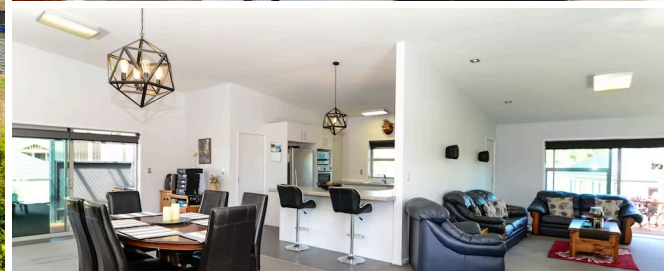




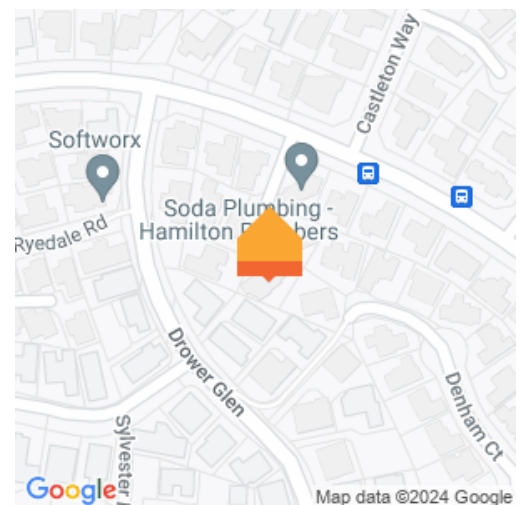
3 Gyll Close, Flagstaff



3 1 2

Welcome to 3 Gyll Close. . . slow down, or you'll miss it. Tucked away in a private, quiet lane off Borman Road in Flagstaff. This stunning home built by Anthem Homes is like no other. With 3 big bedrooms, the biggest open plan living you could desire, a beautiful kitchen with butlers pantry, the large 856m² flat section, spa pool, gas infinity hot water, induction cook top and the ease of indoor/outdoor living. The owners have loved the style and section size, surround sound, privacy, big ensuite, the Summer breeze (when you swing open the doors), how warm it is in Winter, the electronic gate. . . and the high ceilings in the lounge really sold it to them. . . oh and the gorgeous spa pool. The best of schooling is at your reach: Endeavour School, Fairfield Intermediate, Horsham Downs School, Te Rapa School, Rototuna Junior and Senior High Schools. You can push the button, open the gate, and park up your toys, or a large campervan, there is so much parking here. This absolutely sensational home won't sit on the market long, the owner has new plans and has priced it to sell. Make sure you don't let this one get away. Call Lisa Sigley on 021722281 to view. www.lisasigley.com

Land area	856 m ²
Floor size	209 m ²
Rateable value	\$830,000
Rates	\$3,860.00



Lisa Sigley

07 838 3800

021 722 281

lisa.sigley@lugtons.co.nz

<https://www.lisasigley.com/>