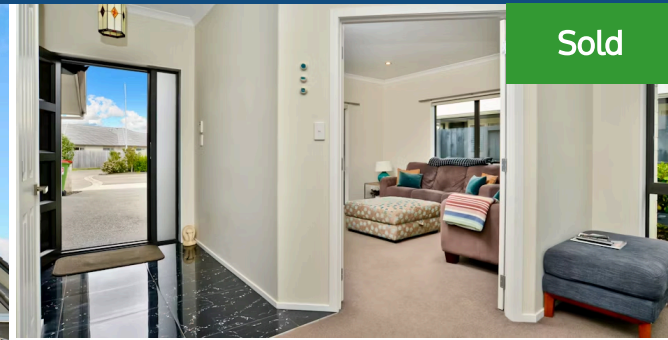




7 Astelia Lane, Rototuna North



Faultlessly presented and in a highly desirable Rototuna North area, this double glazed brick home brings you the best of modern living. The design thoughtfully combines space for relaxing, active living and sun-dappled outdoor entertaining. Living areas are also well-positioned for the sun. They sit under high stud ceilings which enhance the feeling of space and light. The functional kitchen is a quality affair supported by a large walk-in pantry, a five-burner gas hob and 900mm free-standing oven, perfect for entertaining and catering for big numbers. And the two living options are a must-have for a growing family. The sleep zone comprises four bedrooms including a master with the full complement of walk-in robe and ensuite. This relaxed retreat eases outdoors to a private patio that is wired for a spa. Spacious linen cupboards take care of storage needs. The insulated and alarmed home is on gas hot water, has HRV and a heat pump unit for winter heating and summer cooling. Garaging is double internal access. Landscaped for ease of care, the trim-kept 560m2 section has raised veggie boxes and an irrigation system. Style, content and location make this property compelling viewing. It is a superb place to put down roots and future-proof your children's education. Commuters will appreciate the close proximity to main arterial routes. Call Melissa Wilton on 021 157 3459 to view.

Land area	560 m ²
Floor size	209 m ²
Rateable value	\$580,000
Rates	\$3,594.00



Melissa Wilton

☎ 07 853 0013

📱 021 157 3459

✉ melissa.wilton@lugtons.co.nz