



📍 535 Borman Road, Flagstaff

Welcome to 535 Borman Road. . . a beautiful residence built in 2017. Relieve yourself of the stress of building your own, and move straight in here. An ideal "entertainers" home - with flow from inside to out - and enjoying the portico outside during the wet evenings. Located in a prime location for the new Te Ao Marama Primary School, the shopping precinct at Glaisdale, and bus stops/parks very close. You can even cut through the park. . straight to the best playground in NZ. There's plenty of room for all the family with 4 good sized bedrooms, an office nook, the spacial feeling with a 2. 7m stud, large formal living, and a DVS for warm dry living. If you need good storage, then you'll be mighty impressed - storage loft above the garage, plus a large garden shed (pretty fancy too). Enjoy the lavish walk-in linen cupboard, the butlers pantry and a beautiful luxurious bath at the end of the day. Zoned for Te Rapa Primary, Te Ao Marama Primary, Rototuna Junior and Senior High Schools. The owners have new plans, and have presented their home with perfection. You can turn the key on moving day, switch on the heatpump or the gas fireplace, grab a cold one, and put your feet up. Make life all the easier. . . make the move today. Call Lisa Sigley on 021722281. www.lisasigley.com



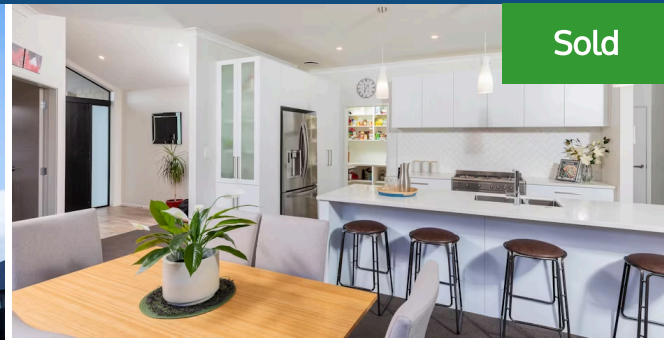
Lisa Sigley

📞 07 838 3800

📱 021 722 281

✉ lisa.sigley@lugtons.co.nz

🌐 <https://www.lisasigley.com/>



🛏 4 🚗 2 🚿 2 🏠

Land area	664 m ²
Floor size	246 m ²
Rateable value	\$870,000
Rates	\$4,090.00

