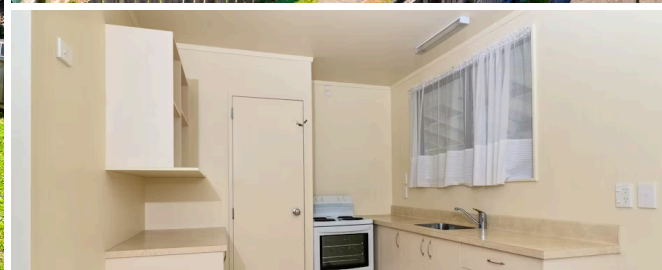


Sold



36A Lindsay Crescent, Nawton

 3  1  1

Calling all first home buyers or those looking to add value to their investment portfolio. 36A Lindsay Crescent offers 3 bedrooms with combined living and dining. Convenience of a heat-pump and it is fully insulated. 36A was rebuilt in 2010 and offers touches we seek. Exterior is hardiplank, double glazed, electric hot water, and comes with a heat transfer system. A current rental valuation is available. This offer is hard to pass on as it brings to any potential buyer a great first home or perfect at a superb level. Call Chip or Rose direct to day on 07 855 7510 for your personal viewing.

Floor size	84 m ²
Rateable value	\$380,000
Rates	\$2,107.51



Chip Humble

☎ 07 855 7510

📱 0274 752 349

✉ chip.humble@lugtons.co.nz

