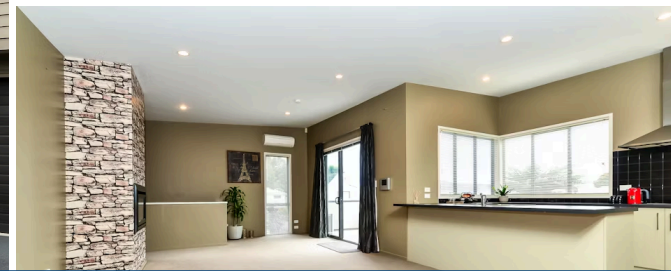




Sold



## 56C Boundary Road, Claudelands

A sunny well designed central apartment offers you the ultimate in lifestyle living. Spread across approximately 170sqm of floor area with a larger master bedroom, ensuite and walk-in upstairs, with three more bedrooms and a bathroom on the ground floor. Freshly painted inside and out with feature walls and open plan living opening out onto a large sun-filled deck with treed outlook. Decor is on trend with a stylish kitchen and all the modern convenience of todays living. Zoned for all the right schools, close to parks, Claudelands arena and shops with the bonus of double garaging. Located well off the road in a tidy complex of four you will be amazed at the value on offer here. Call Terry and the team for a private viewing.

 4
  1
  2
 

Floor size	168 m <sup>2</sup>
Rateable value	\$530,000
Rates	\$2,205.31



Terry Ryan

☎ 07 855 0550

📱 021 909 978

✉ [terry.ryan@lugtons.co.nz](mailto:terry.ryan@lugtons.co.nz)

🌐 <http://www.terryryan.co.nz/>

