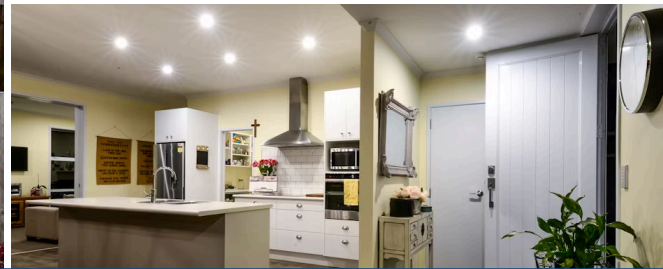




Sold



15 Rigg Place, Flagstaff

4 bedrooms, 2 bathrooms, 2 living areas, 2 car garage

Welcome to 15 Rigg Place. . . where you'll feel on Cloud 9. Coming home will be a dream - the design, the decor, the outlook, the storage, the dreamy window seat, the "hobbies room" (to escape and have a beer) . . . and the Mc'Dreamy wallpaper. Our owners had Anthem Homes design and build this in 2014 exactly to their own specs, which means you'll not walk into another home the same. The magnificent peaceful setting is conveniently positioned to the new Te Ao Marama Primary School, New Hare Puke Park, New shopping precinct, bus stops - its all here in this modern urban neighbourhood. Steve and Ashleigh say that the home and area has not disappointed them - they've loved the outlook to the hills, the quiet cul-de-sac, the very cool steel door between the living, the lounge/dining flow to the outdoor deck, the sunsets, the way they can close it off when the family head to bed, and one thing for sure is. . . its a great looking home. If you love entertaining, the "Plain and Fancy" designer kitchen with spacious butlers pantry, dishwasher, insinkorator, rangehood, electric hob/wall oven - means you can enjoy the view while whipping up a batch of pikelets. If tinkering in the shed is your "go to". . . there's a modern "cave" at the back of the property, with power and fridge - the perfect little hide-away. With 4 bedrooms, 2 lounges, 2 bathrooms, double garage (with storage above), H. R. V, stacker doors that open right up seamlessly - you'll have every reason to make this your "dream come true" home. Call Lisa Sigley on 021722281 to view today. www.lisasigley.com

Land area	655 m ²
Floor size	219 m ²
Rates	\$3,462.00



Lisa Sigley

07 838 3800

021 722 281

lisa.sigley@lugtons.co.nz

<https://www.lisasigley.com/>