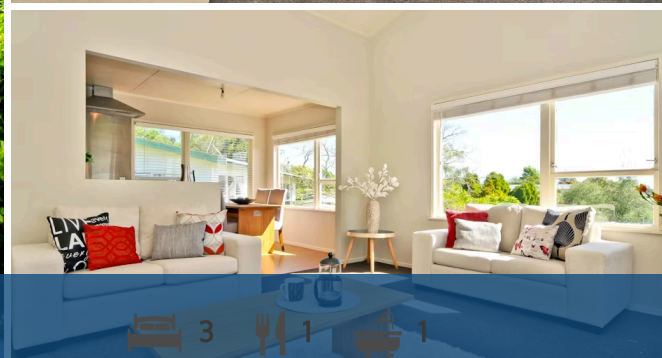
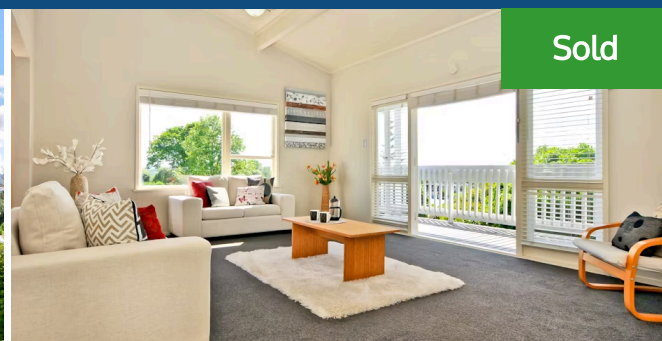




## 38 Pohutukawa Drive, Pukete



First home buyers and investors take note. This is an affordable chance to get on the property ladder. 38 Pohutukawa Drive is superbly advantaged by position. It is situated in an established suburb of Hamilton and admirably serves the needs of family wanting to be close to highly regarded primary schools, Te Rapa's commercial and retail sectors including The Base, public transport links and an easy stroll to Braithwaite Park and the River walkway. Situated on an elevated site boasting amazing views towards the Hakarimata Ranges, this sunny home benefits from a recent renovation of the kitchen and bathroom. There are three generous size bedrooms, two of them having bifold doors opening to extensive decking, an open plan kitchen dining living area that basks in the sun and also opens out to decking, plenty of room to park the boat or trailer and copious amounts of basement storage. The home's Hardiplank exterior cladding ensures a reasonably easy upkeep. You can't look past this investment - it represents clever buying. The current owners have lived there for 10 years.

Land area	705 m <sup>2</sup>
Floor size	100 m <sup>2</sup>
Rateable value	\$410,000
Rates	\$2,650.00



### Kerry Hopper

☎ 07 838 5870

📱 021 984 173

✉ [kerry.hopper@lugtons.co.nz](mailto:kerry.hopper@lugtons.co.nz)

🌐 <http://kerryhopper.nz/>

