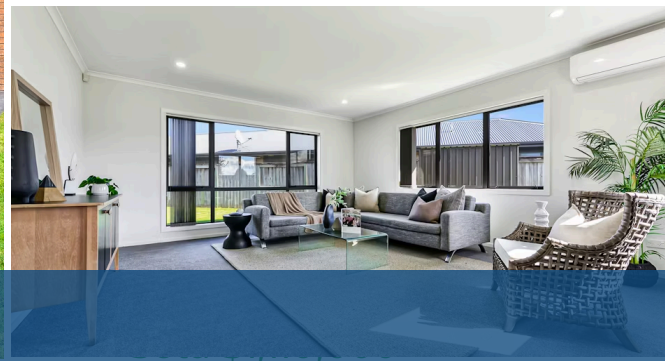


Sold



## 8 Mosslea Court, Rototuna

This sun-soaked home nesting in a vibrant location with generous living spaces is waiting for your family's arrival. As you stroll towards the entrance, stepping onto the welcoming foyer, you will feel a sense of freshness. An inviting open-plan living area combining the lounge, kitchen and dining spaces perfect for those who love to entertain. A large kitchen bench island in the centre of the area will help show off your Master Chef culinary skills. Around the corner, two large sliding doors not only connects you to the outside patio, it allows the warming sunlight to beam through all day long. Alternatively, a private secondary lounge offers extra space for growing families. Practicality and convenience play a huge part when it comes to 8 Mosslea Court. Large ensuites offer you enough room for a huge bed and an arm chair to relax in. A bathroom with a separate toilet shared between the 3 other bedrooms as well as stand-alone laundry area with a built-in cupboard in the garage offers great functionality for the household.



Land area	680 m <sup>2</sup>
Rateable value	\$1,150,000
Rates	\$4,422.00



Jono Ng

☎ 07 853 0013

📱 021 231 3031

✉ jono.ng@lugtons.co.nz



Aman Sadhra

☎ 07 853 0013

📱 021 192 2356

✉ aman.sadhra@lugtons.co.nz