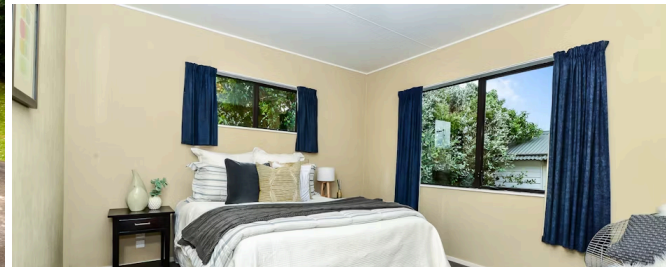




📍 6A Gibson Road, Dinsdale



Sold



🛏 3 🚗 1 🚿 1

Wow your friends with your very tidy first home situated in popular Dinsdale. Enjoying a separate lounge off the dining and kitchen area with a heat pump/air conditioning unit and deck to enjoy a glass of wine in the evenings. Also included is a separate laundry and toilet, separate bath with stand alone shower and three decent size bedrooms with built in wardrobes. There is also a DVS system to keep your home dry and with insulation in the ceiling and under floor, you will be kept warm during the winter months. Outside there is a carport and off street parking plus a cute wee garden shed. Location is a huge plus with this home, with local shops a short walk away, bus stop almost on the door step and minutes from Lake Koromatusa Wildlife Reserve, Whatatwhata and a short drive to the CBD and Hospital. As a first home this property has all you need and more.

Rateable value \$430,000
Rates \$2,220.55

