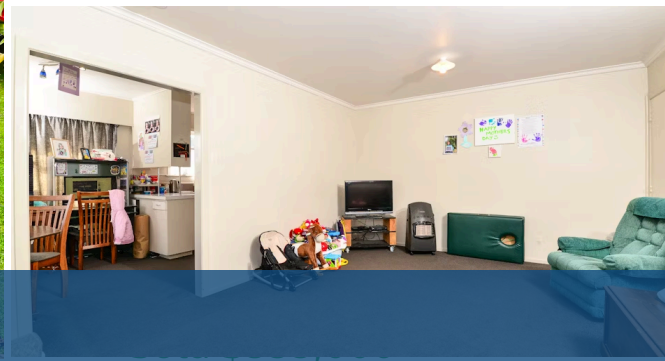




Sold



29 Cecil Street, St Andrews

This 1960's classic kiwi home on 640m² (more or less) section offers great family living in the heart of Saint Andrews. Walking distance to Cinnamon Cafe for those Sunday morning brunches, and an easy commute to The Base Shopping Centre and Chartwell Shopping Centre. This three bedroom home offers a wonderful start for first home buyers that want the opportunity to personalise this home to make it their own. Or if you are an investor - then the lovely tenants, who have made this their home, would love to stay. With a garage and carport - there is plenty of room in the backyard for barbeques and children, friends and family. Make sure you don't miss this opportunity to view, call me to make a time to show you through. Heather Whyte 027 239 2751



Land area	640 m ²
Floor size	110 m ²
Rateable value	\$485,000
Rates	\$2,629.02



Heather Whyte

☎ 07 855 0550

📱 027 239 2751

✉ heather.whyte@lugtons.co.nz

