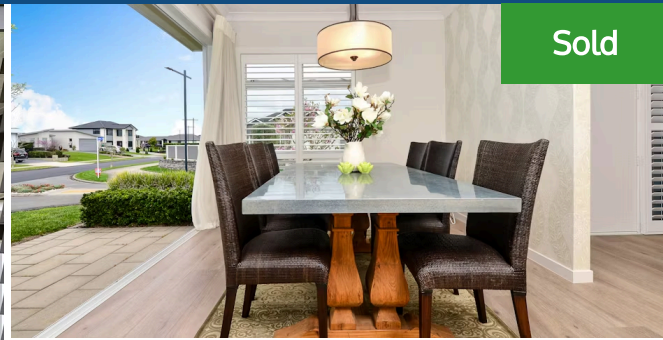




2 Audrey Place, Flagstaff



Sold



4 bedrooms 2 bathrooms 2 living areas 2 car spaces

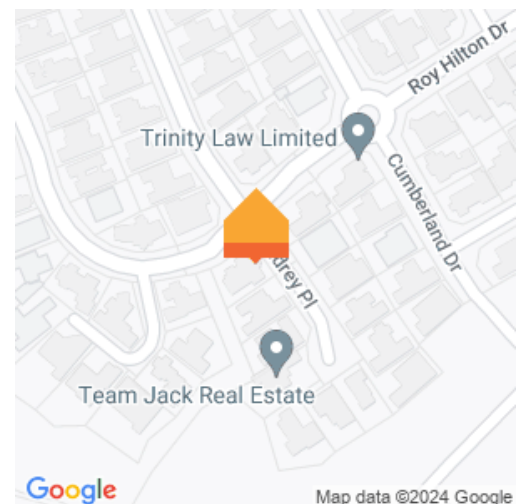
Brimming with high-specs throughout, this contemporary Landmark home showcases what can be achieved when modern design, superior materials and personal living needs come together. Fit for purpose, the interior revolves around laid-back living and an effortless indoor-outdoor lifestyle. Living spaces mingle in the social hub that is designed for entertaining. The kitchen is ideal for food enthusiasts, containing a scullery and gas cooking. Double glazing, a gas fire and ducted heating throughout wrap the home in warmth and comfort, and the separate laundry and internal access garage enhance its desirability. Sante Fe shutters dress windows in style and the large north-facing portico extends off the lounge encourages outdoor living and relaxing. Four double bedrooms and two stylish tiled bathrooms provide lots of scope for a family while the executive style of the home makes it suited to professionals and retirees. Sitting pretty on an elevated 703sqm corner site, the property is a haven for modern living. It lies close to Borman Village, Hare Puke Park, Te Ao Marama Primary and commuter routes. Call Terry today to view this property or visit my personal website www.terryryan.co.nz to download any further information you require.

Land area

703 m²

Rates

\$4,731.33



Terry Ryan

07 855 0550

021 909 978

terry.ryan@lugtons.co.nz

<http://www.terryryan.co.nz/>