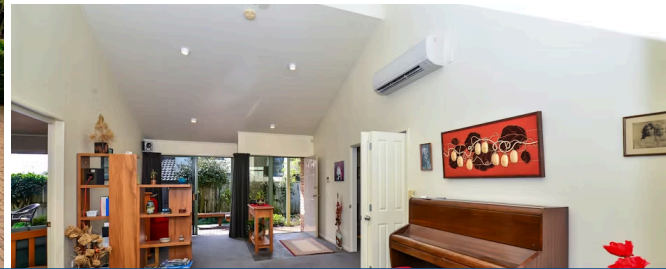




Sold



6 Hubert Place, Chartwell

Upon arrival, the high stud entrance atrium and living space lets in all the light and gives a wonderful airy feel to your first impressions. The second large living area also features that gorgeous high ceiling, and these entertainment havens can be opened up for large parties or closed off for more intimate gatherings. A well appointed kitchen and dining space are separate again, and easily accessible from the double garage meaning you can unload from the car directly to the pantry. There is so much storage here, both in the garage and in the home. Four bedrooms serve those who choose to call 6 Hubert Place home, the master with ensuite and walk in robe opens out to the north facing deck with Louvretec and the beautifully manicured section, featuring a perfect lawn and loved garden. Round the back is a garden shed, space for propagation and tool storage. All this sits at the top of the cul de sac with plenty of parking, long views and lots of sunshine. Zoned for Hukanui Primary with easy access to Porritt Stadium, the Greenhill shops and medical centre, Wayward Pigeon and other excellent eateries. Please copy the following link to download the Property Files:

<https://www.propertyfiles.co.nz/property/hubert6>



Land area	711 m ²
Rateable value	\$760,000
Rates	\$3,819.62

