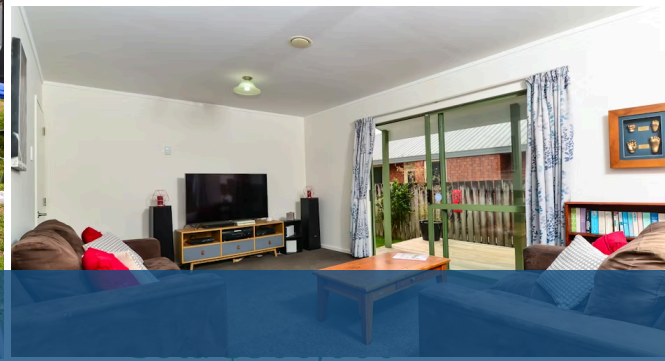




Sold



📍 42B Lloyd Drive, Nawton

Please Note: New Open Time for SUNDAY. 1pm to 1. 30pm. Step inside and you will see just how loved this home has been by the current young family for the past 9 years. Recently redecorated, fresh and vibrant - situated at the end of a long driveway, this sun-soaked home represents the perfect opportunity for first home buyers to establish a foothold in the market today. Inside you will find three good sized bedrooms, family bathroom with separate shower, open plan living with kitchen tucked away. The living spaces enjoy all year-round comfort thanks to the heatpump and smartvent. For the added security there is an alarm. The deck from the living area enjoys the afternoon sun, the private backyard is an added bonus, with plenty of space for small families and their pets. This superbly presented property is sure to attract interest from an array of prospective buyers. Interested parties are advised to act quickly - contact me today for further details.



Land area	593 m ²
Rateable value	\$365,000
Rates	\$2,185.22



Heather Whyte

📞 07 855 0550

📱 027 239 2751

✉️ heather.whyte@lugtons.co.nz

