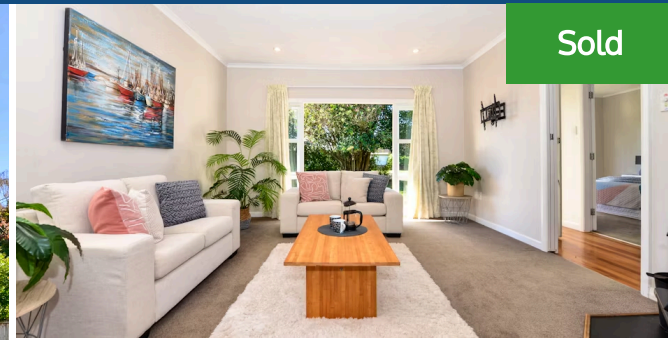




📍 20 Odette Street, Bader



Sold



Welcome to 20 Odette Street. . . if you've been fancying living very central, or work at Waikato Hospital - then walking will be easy. This lovely 3 bedroom 1950's weatherboard home features a double garage, and is set on a 678m² section. Nice wood fire for the Winter days ahead, insulated top and bottom, and lux native timber floors. There's still room for some improvement, and the vendors are prepared to look at offers. They have some exciting new plans, and say this was their very own "starter home". With the Melville Skate Park, the Melville dog park, shops, bus stops, all grades of schooling and right in the middle of the airport/university - great if you all need to take off in different directions. Living so central means you're in amongst all the vibrancy of the City. Make sure you don't pass by 20 Odette Street. Call Lisa Sigley on 021722281 www.lisasigley.com

Land area	678 m ²
Rateable value	\$670000



For an information pack copy and paste the below link on your web browser
<https://www.propertyfiles.co.nz/property/odette20>



Lisa Sigley

📞 07 838 3800

📱 021 722 281

✉️ lisa.sigley@lugtons.co.nz

🌐 <https://www.lisasigley.com/>