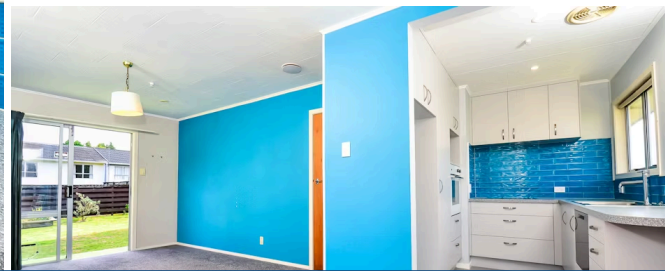




Sold



7A Maple Avenue, Dinsdale

2 bedrooms 1 car 1 bathroom

Welcome to 7a Maple Avenue. . . hidden away - so quiet and private. The owners have found their 2 bedroom unit perfect to get onto the property ladder. They've upgraded the bathroom, plus the kitchen is very flash. With dishdrawer, nice pantry with pull-out drawers, modern Rhino carpets, new LED's in the kitchen - you can move straight in and relax. The aircon will keep you cool over the Summer, and then warm over the winter, plus included is a smart vent to keep the home nice and dry. Insulated top and bottom. There's a ranch slider opening up to the expansive lawns - plenty of indoor/outdoor flow. You're so close to Aberdeen Primary and Fraser High, and in zone for Frankton Primary plus Maeroa Intermediate too. It feels private and quiet and you'll feel nice and safe. There's a single detached garage with automatic opening. You can also slip on down to the local Aberdeen Dairy for the milk. This is a very sweet home, you can move in immediately. Call Lisa Sigley to view today 021722281 www.lisasigley.com

Rateable value

\$600,000



For an information pack copy and paste the below link on your web browser
<https://www.propertyfiles.co.nz/property/maple7a>



Lisa Sigley

07 838 3800

021 722 281

lisa.sigley@lugtons.co.nz

<https://www.lisasigley.com/>