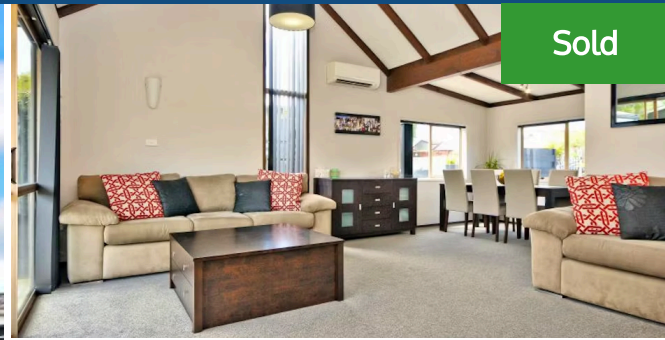
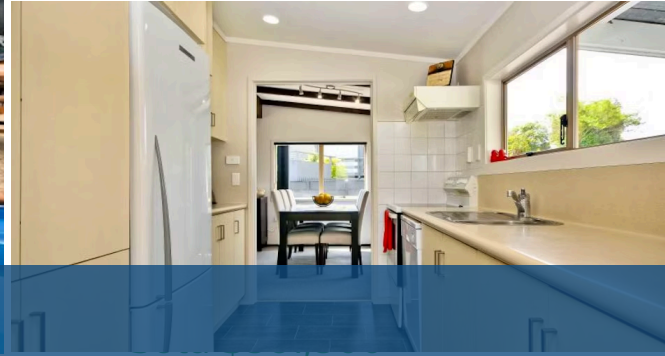




📍 180 Whatawhata Road, Dinsdale



Sold



Hey guys. . . this one will be "the" home you'll be texting your friends about. . . They'll be wanting to drop in during Summer to enjoy the pool. . . or in Winter for that soothing hot spa. This is a very friendly home. Lovers of the 70's - this still has some of those classic details - high ceilings, nice big windows, and decent sized lounge/dining and bedrooms. There's a seamless flow from living - out to the covered patio, lawn and pool. Those looking for a "man-cave" or a hobbies room. . . yes, thats here too. Even though its located on Whatawhata Road - you're well away from the traffic - right on top of the hill. There is parking for everyones cars too - heaps of it. The owners have loved living here since 2011, and have done some nice painting, decorating and landscaping - you'll be able to move straight in and relax. Busy people needing all the mod-cons - there's a dishwasher, heatpump, ceiling fan, ultrafast fibre, heat transfer system, and if your children need a bus. . . its down the driveway. School zoning includes Aberdeen, Frankton, Maeroa and Fraser High School - you've got all your bases covered. The hot Summer is coming, and entertaining outdoors is just days away. . . make sure you call Lisa Sigley on 021722281 and dive in - take the plunge - backstroke off to the bank - and dip your feet into home ownership, this one will make a big splash.



Land area	811 m ²
Floor size	110 m ²
Rateable value	\$365,000
Rates	\$2,313.00



Lisa Sigley

📞 07 838 3800

📱 021 722 281

✉️ lisa.sigley@lugtons.co.nz

🌐 <https://www.lisasigley.com/>

