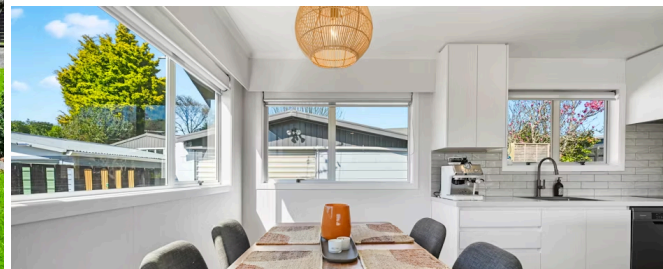
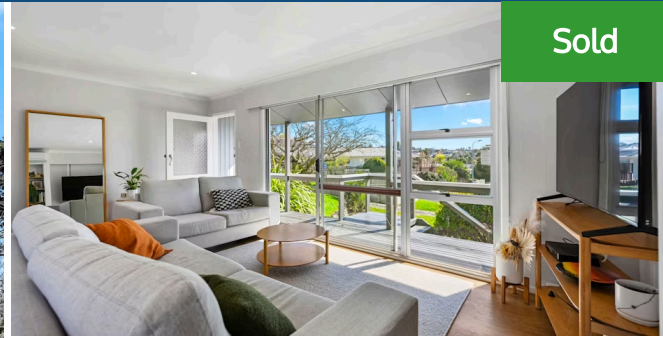




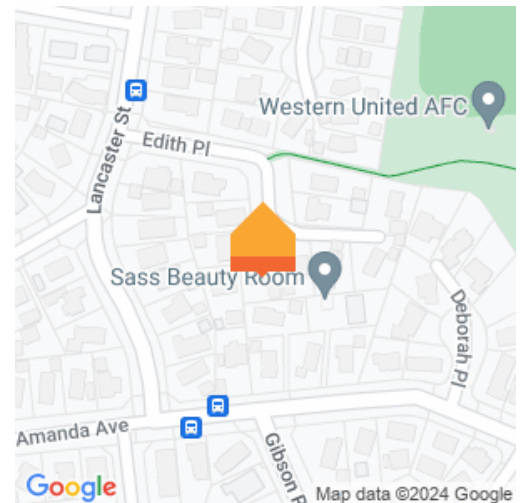
12 Edith Place, Dinsdale



3 bedrooms, 1 bathroom, 1 garage

A showcase of appealing style enhanced with contemporary upgrades; this three-bedroom home is peacefully placed in a welcoming cul-de-sac location. Positioned within easy reach of Dinsdale Shopping Centre, the newly refreshed Bremworth Park and zoned for Aberdeen Primary School. Presenting an outstanding opportunity for first home buyers and investors alike. Completely refurbished, the gorgeous kitchen has a flawless display of soft neutral tones and quality appliances including a dishwasher. Dining area is adjacent. The living area has a heat pump with a warm and inviting ambiance, opening to the sunny front verandah with a peaceful, elevated outlook. Three good sized bedrooms and a beautifully tiled family bathroom with on trend fixtures and fittings. Additional features include the separate laundry, insulated top and bottom, and a detached 1.5 garage. Set on 609m² (approx.) of land, this property offers an ideal space for entertaining friends and family on the private BBQ deck overlooking the grassed backyard. It's all set for immediate occupancy and enjoyment with all the hard work done. To download the property files, please copy and paste the following link into your browser: <https://www.propertyfiles.co.nz/property/12edithplace>

Land area	609 m ²
Floor size	126 m ²
Rates	\$3,095.00



Jamie Barakat

07 853 0013

0274 285 426

jamie.barakat@lugtons.co.nz