

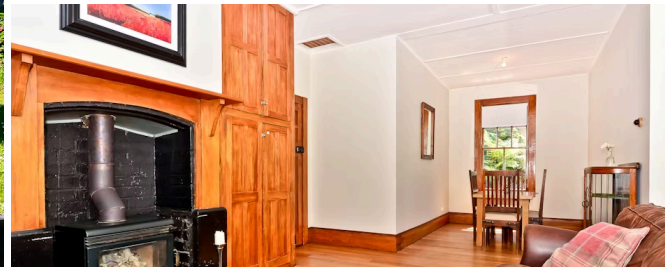


7 Makomako Street, Frankton

This delightful historic railway cottage built in the 1920s in the Frankton Railway Village reflects a lifestyle and time of a bygone era, and will instantly appeal to romantics, young first home buyers looking for something with a love connection. The atmosphere character and charm of the era is evident in the abundant use of native timber which creates a feeling of warmth and comfort plus the wood burning fire to relax by. The high stud, and natural light in the open plan kitchen dining lounge gives a light airy atmosphere for relaxed family living. Doors from this area provide the perfect indoor outdoor flow to the timber deck and garden, great for long hot summer days. Offering 3 good sized bedrooms, family bathroom with shower, pedestal basin and toilet. Well-appointed kitchen, electric stove, dishwasher, large pantry, breakfast bar. The view from the large kitchen window gives good visibility of the back garden for keeping an eye on the kids. Plus there is an outside utility room that has been used as a hair salon, which could be used as a sleep out. Plus a separate laundry building with a separate 2nd toilet and hand basin. Family sized private 671m2 section with good vehicle access to the garage with plenty of off street parking. They don't come much cuter than this, you could move in for Christmas. So convenient, close to the Central City, Frankton and Dinsdale Shopping facilities, parks, bus stops, Frankton Primary School, St Colombas Catholic School. Call Lynn Green now.



Sold



| | |
|----------------|--------------------|
| Land area | 671 m ² |
| Rateable value | \$400,000 |
| Rates | \$2,114.60 |

