



18 Thode Place, Newton

The elevation creates a sense of seclusion situated on a private 701sqm section framed by mature trees. Recent renovations include a new bathroom, flooring and feature wall-paper throughout. The open plan living is ideal for entertaining spilling out to a generous wrap around deck perfect for those summer days ahead. Large kitchen with dishwasher plus conservatory for those morning coffees overlooking the private back yard. Three double bedrooms to choose from. The property is perfect for first home buyers looking for value and location. Situated in a quiet cul-de-sac, this recently painted home is ready to move right in with vacant possession. Good garaging and extra shed plus extra off-road parking. Motivated vendors so don't miss this opportunity and call the team today to view.



Terry Ryan

☎ 07 855 0550

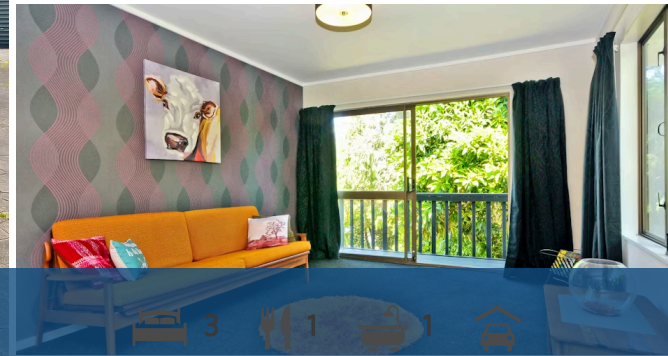
📞 021 909 978

✉ terry.ryan@lugtons.co.nz

🌐 <http://www.terryryan.co.nz/>



Sold



Rateable value	\$375,000
Rates	\$2,537.48

