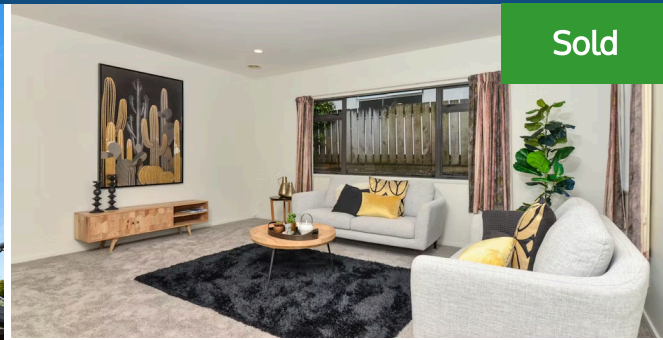
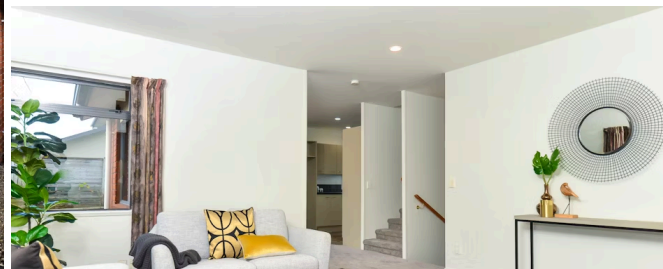




📍 29 Ranui Street, Dinsdale



Sold



Start the day with a scenic snapshot of Hamilton and end it gazing at a twinkling stars and city lights. This elevated, multi-level home has plenty to offer a young family and there's not a blade of grass to mow thanks to a large enclosed courtyard and a cobbled driveway. Organised over three tiers, it has function at its very core and delivers easy indoor-outdoor living. Set on a double internal access basement garage, the home has a solid presence on the landscape. Its first floor contains well-configured open plan living, the children's sleep zone and main bathroom. The kitchen captures a panoramic outlook and lets cooks be part of everyday life. A sliding door off the dining room opens to the entertainment patio. The lounge is a large, cosy space for family togetherness and the laundry has plenty of storage room. A spacious master suite occupies the top level, allowing parents some peace and privacy. A ventilation keeps the interior dry and pleasantly ambient. Gardens are neatly retained. The property lies in a child-friendly neighbourhood close to schools, shops and medical centre. State Highways 1 and 23 are handy for commuters. Navigating the city and west coast is a breeze.



Land area	565 m ²
Rateable value	\$560,000
Rates	\$2,991.73



Jono Ng

📞 07 853 0013

📱 021 231 3031

✉️ jono.ng@lugtons.co.nz