



📍 8 Jarvis Court, Huntington

Your tinted and double glazed family home enjoys a quiet end of cul-de-sac setting in a quality location. Whatever the activity, there's plenty of space for everyone to enjoy, with choices in living areas, a large granite kitchen, four double bedrooms and opportunities to lounge outdoors late into the day. A smooth transition between rooms ensures flow is achieved throughout your modern, easy care brick home. Window seating in the front lounge offers a sunny spot for a day-time escape, while stacker doors in the family living zone give you immediate access to the entertainment courtyard for a laid back summer lifestyle. The master retreat, with its assemblage of walk-in robe and tiled ensuite, also opens to the courtyard. Three generous family bedrooms are served by a tiled main bathroom. Finely tuned for family living, there are spaces for relaxing, entertaining and privacy. Enhancing comfort, convenience and value is a range of inclusions including a heat pump, central vac system, gas hot water and gas cooking. Garaging is double internal augmented by garden shed storage.

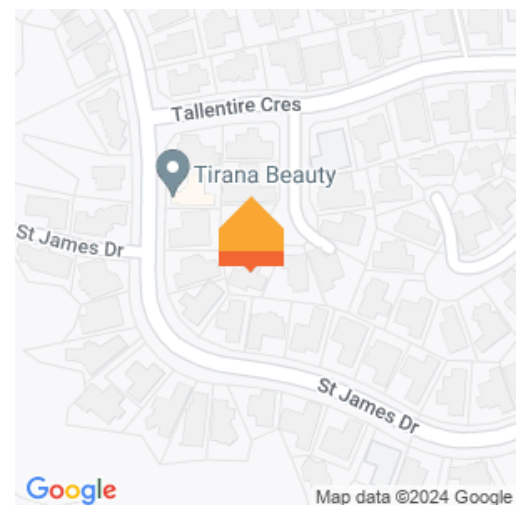
🛏 4 🍴 1 🚿 2 🚗

Land area

719 m²

Rates

\$3,415.08



Kris Gray

📞 07 853 0013

📱 021 318 122

✉ kris.gray@lugtons.co.nz



Wei Sen Chow

📞 07 838 3800

📱 027 455 4477

✉ weisen.chow@lugtons.co.nz

🌐 <https://www.weisenchow.co.nz/>