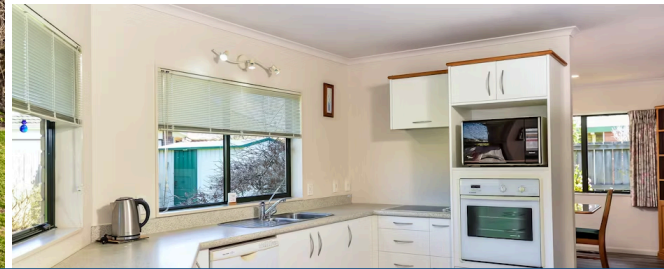


Sold



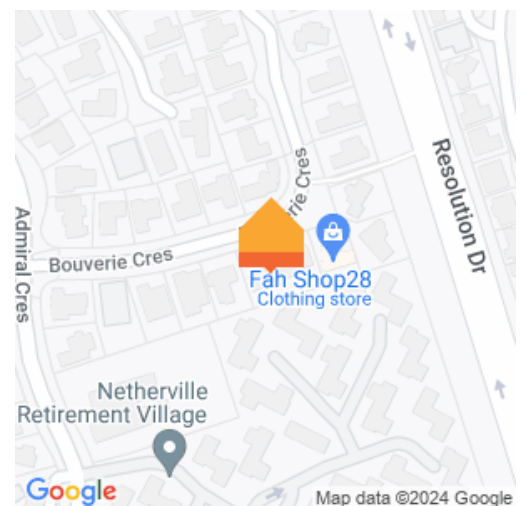
12 Bouverie Crescent, Flagstaff

Welcome to 12 Bouverie Crescent. . in a quiet street so close to a bustling array of shopping centres, and quick access to the expressway. The owners had their home built by Tailormade Homes in 1996, and have loved it here since - with 4 good sized bedrooms, 2 lounges, 2 bathrooms, double internal access, the fantastic secure yard for the children, and say that the spaces are very practical. Copy and Paste this link to download document files: https://drive.google.com/drive/folders/1Am_L2HXILRqtEnOJH3Iymq6JAdyAU-6i?usp=sharing

Zoned for Endeavour Primary, plus the Rototuna Junior and Senior Schools - you're children will be able to walk, scoot or bike to school, Living so close to Olive Cafe' will be perfect for those Saturday Morning Latte's, plus you've got a park for leisure activities just around the corner. This immaculately presented brick home has been updated with new carpet/laminate flooring, kitchen upgrade and a paint refresh. . . . You can enjoy all the modern conveniences such as gas central heating, dishwasher. . . plus with Summer on the way - there's a fantastic plum tree. Enjoy all that this well established, quiet area has to offer. The owners have some exciting new plans, so are seriously on the market. Make sure you get along to view. Call Lisa Sigley on 021722281 today. www.lisasigley.com

 4  2  2 

Land area	709 m ²
Floor size	203 m ²
Rateable value	\$700,000
Rates	\$3,526.00



Lisa Sigley

 07 838 3800

 021 722 281

 lisa.sigley@lugtons.co.nz

 <https://www.lisasigley.com/>