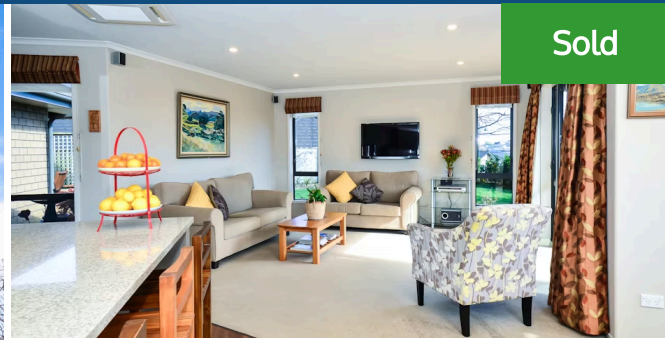




📍 2 Telford Place, Flagstaff



Sold



CONTACT LISA NOW TO SECURE YOUR PRIVATE VIEWING TIME:

Welcome to 2 Telford Place. . . sitting proudly with views out to the Hakarimata Hills and beyond. Built by GJ Gardner Homes in 2012 - the owners tweaked their show home to make it fit perfectly on the corner section, and make it unique to them. . . With 4 bedrooms, 2 lounges, 2 bathrooms, 3 car garaging and set on a manicured 708m² fully secure section. It may read like other homes, but the moment you enter, you'll know its right for you. You'll feel like the aspect is open - yet its very private. With the wide formal entrance, introducing you through to the fantastic media room with doors to the expansive portico, then leading you around to the "social" kitchen plus spacious scullery - this really does feel like "home". Swing open the doors in Summer and enjoy the breeze, then in Winter the sun simply streams in for warmth. School Zonings include: Te O Marama Primary and Rototuna Junior/Senior High Schools - you know these are the ones you've been looking for. Put it all together - rinnai gas hotwater, fruit trees, supermarkets/shops close by, brick, double glazing, flat section, concrete stone polished benchtop, French doors off 3 rooms, fully insulated garage (with a ranchslider), a home that's not a "cut and paste". . . Then this is the new home you'll want to move into. NOTE CHANGE: Auction date is set for 15/9/21 - you'd better be quick. This could be the fleeting moment you cannot miss. Call Agent Lisa Sigley on 021722281. www.lisasigley.com

Land area

708 m²

Rates

\$4,710.00



For an information pack copy and paste the below link on your web browser

<https://www.propertyfiles.co.nz/property/Telford2>



Lisa Sigley

📞 07 838 3800

📱 021 722 281

✉ lisa.sigley@lugtons.co.nz

🌐 <https://www.lisasigley.com/>