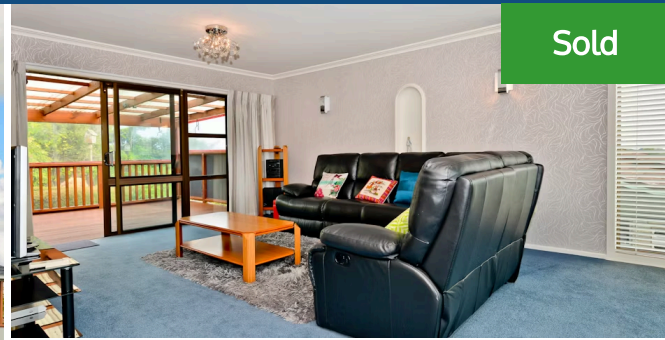




## 14 Russleigh Drive, Dinsdale



Sold

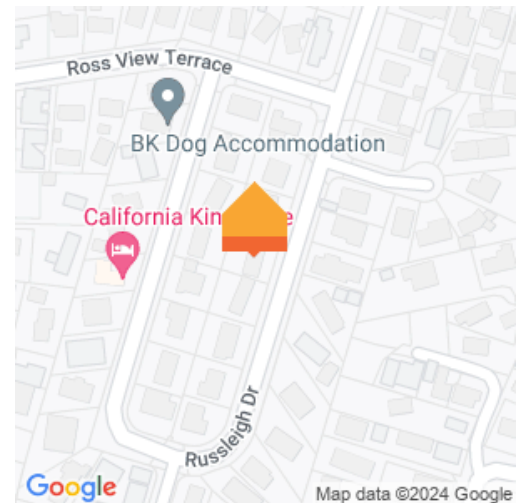


Welcome to 14 Russleigh Drive. . . in the tree lined, ever-popular hills of Dinsdale. You'll be excited by the living style here - it has the best layout for those entertaining friends and family during Summer and Winter. . . from the private deck overlooking Hamilton, or the "all weather" covered patio out the back. After 24 happy years and many fun memories, the owners are now ready to hand the keys over - so you can start your new lifestyle right here. They've enjoyed how private the back yard is, the friendly neighbours, loved the gardens, spent many hours on the front deck in the morning sun, then moved around to the back patio for an evening drink. If you're looking for a single level, brick, very sunny, classic family home, with plenty of parking and garaging, on a flat section. . . then this will excite you. The 3 bedrooms are all spacious, there's plenty of storage, completed with the convenience of Gas Infinity Hot water, the comfort of Air conditioning, fresh air with a DVS System, and the style of quality drapes - what more could you want?

The children can skoot on down to Aberdeen School, Maeroa Intermediate or Fraser High School. Bus stops, shops, doctors, parks, Kindies. . . yes, they are all nearby. The kitchen enjoys the blessing of you being able to watch the children play in the back yard - its very user friendly. This quiet street is always popular, and homes don't stay on the market long. Make sure you set an appointment to view. Contact Lisa Sigley on 021722281 [www.lisasigley.com](http://www.lisasigley.com)



Land area	708 m <sup>2</sup>
Rateable value	\$435,000
Rates	\$2,851.00



**Lisa Sigley**

☎ 07 838 3800

📞 021 722 281

✉ [lisa.sigley@lugtons.co.nz](mailto:lisa.sigley@lugtons.co.nz)

🌐 <https://www.lisasigley.com/>