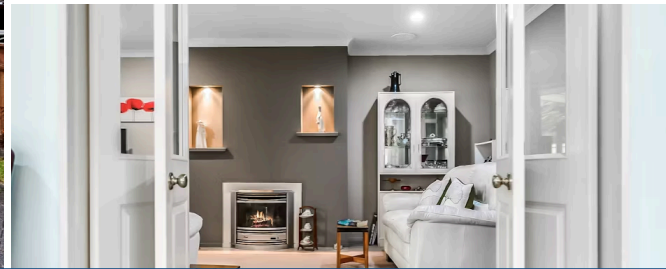




Sold



16 Ruby Court, Chartwell

3 bedrooms 2 bathrooms 2 garden sheds

- Brick and tile
- Built in 2000
- Only one owner
- Some double glazing (kitchen & dining area)
- 3 bedrooms
- 2 living
- 2 bathrooms
- Double internal access garage
- Large workshop
- Heatpump and gas fire
- 2 garden sheds
- Great indoor-outdoor flow
- Large deck which is private
- Freehold 475m2 section
- Zoned for Hukanui Primary School

Land area	475 m ²
Floor size	180 m ²
Rateable value	\$1,020,000
Rates	\$3,835.00



Call Melissa Wilton for further information or to view on 021 157 3459. To download the property files please copy and paste the below link into your browser:

<https://www.lugtons.co.nz/property/16-ruby-court-chartwell-731000000>



Melissa Wilton

☎ 07 853 0013

📱 021 157 3459

✉ melissa.wilton@lugtons.co.nz