

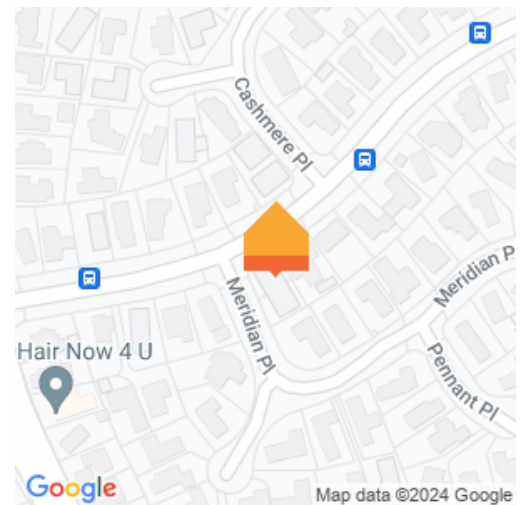


111B Endeavour Ave, Flagstaff



Part of a brand new duplex development in the heart of Flagstaff, this smart home has an Endeavour Avenue address with the benefit of cul-de-sac access. Combining modern architectural elements with quality building materials, the sparkling new home delivers the complete contemporary Kiwi living experience. It is ideally positioned to take advantage of the very best the area has to offer. The home offers a simple yet balanced composition, enhanced by professionally themed indoor and outdoor environments. The stylish painted brick and Axon board exterior, together with full landscaping, creates a striking urban streetscape. Grassed areas are lush and the concrete courtyard is large, sunny, and seamlessly connected to the outdoor living areas. Hard surfaces throughout the home are tiled and high-end Bosch appliances feature in the kitchen. Living is open concept and sun-orientated. Accommodation comprises three bedrooms, including a master with ensuite. The laundry is housed in the single internal access garage. Ready for immediate enjoyment, the double glazed home is alarmed, fitted with a heat pump and has gas services. Tucked quietly behind its twin, the home overlooks the Meridian cul-de-sac, which has walk-through access to Flagstaff Park, sports ground and shops. Endeavour School is footsteps away. Kids can walk or scooter to school with ease. Duplex living appeals to buyers wanting less property maintenance, greater lifestyle benefits, and the freedom and financial security afforded by independent, freehold living. For further information to download on this property go to - View agents personal website

Land area 393 m²
Floor size 141 m²



Terry Ryan

☎ 07 855 0550

📞 021 909 978

✉ terry.ryan@lugtons.co.nz

🌐 <http://www.terryryan.co.nz/>