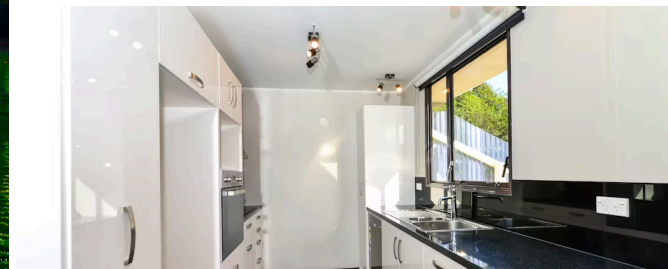




22C Odlin Crescent, Newton



3 bedrooms, 1 bathroom, 1 car, 1 boat



Welcome to 22c Odlin Crescent. . . don't be fooled by the "C" . . . as you'll see it's set on a massive 856m² private quiet section. Quite the surprise awaits you. This renovated 3 bedroom 1980s home includes a heatpump, Ventilation System, modern kitchen with dishwasher/hob/wall oven, alarm, fantastic bathroom and a massive garage too. You'll be pleasantly surprised how quiet and private it is here, and the owners say they enjoyed the close proximity to Te Rapa The Base, and quick access to the expressway. Incredibly good buying here - you can enter to the Crawshaw park through the back fence - like your own playground. This Winter long luxury baths will await you in the evening. This home could suit you as a rental or an exciting start to home ownership, maybe you want a home in town where you've got loads of room for your cars and caravan/boat? This is a light bright home with some fantastic "extras" thrown in. Make sure you book to view it. Call Lisa Sigley on 021722281. www.lisasigley.com

Land area 856 m²
Rateable value \$700,000



For an information pack copy and paste the below link on your web browser
<https://www.propertyfiles.co.nz/property/odlin22c>



Lisa Sigley

☎ 07 838 3800

📞 021 722 281

✉ lisa.sigley@lugtons.co.nz

🌐 <https://www.lisasigley.com/>