



6 Bouverie Crescent, Flagstaff

Designed for a growing modern family, this four-bedroom brick home has a big heart. Three living areas make it easy to share time with family and entertain friends, and seamless indoor-outdoor flow strikes at the very essence of relaxed living. The large, covered patio lets occupants enjoy the outdoors through all seasons, and being fenced, it is an ideal playground for young children. Family cookouts and alfresco relaxation are certainly on the cards. The barbecue is plumped in. Large sliders off the well-appointed kitchen make hosting easy and the effortlessly flowing layout is in synch with a family's lifestyle. There's plenty of room for socialising and activities, good bedroom options, two bathrooms, including an ensuite, and a double internal access garage. Everyday functionality makes the home very liveable, and HRV and gas heating ensures an ambient interior all year round. There's scope to modernise and add value, if desired. The backyard is private, sunny, and perfect for outdoor games. Two sheds will appeal to gardeners and home handy people. Picturesque Bouverie Crescent is a quiet, leafy street walking distance from Endeavour School, Flagstaff Park, and local amenities, and in zone for Rototuna high schools. Commuter routes are close.



Jono Ng

☎ 07 853 0013

📞 021 231 3031

✉ jono.ng@lugtons.co.nz

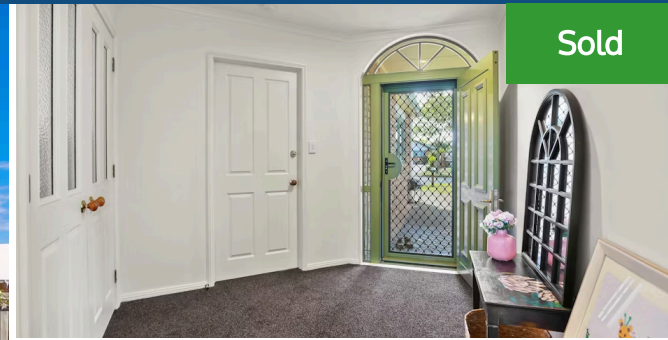


Aman Sadhra

☎ 07 853 0013

📞 021 192 2356

✉ aman.sadhra@lugtons.co.nz



Sold



🛏 4 🚗 3 🚿 2 🏠

Land area

787 m²

Floor size

232 m²

Rates

\$4,381.92

