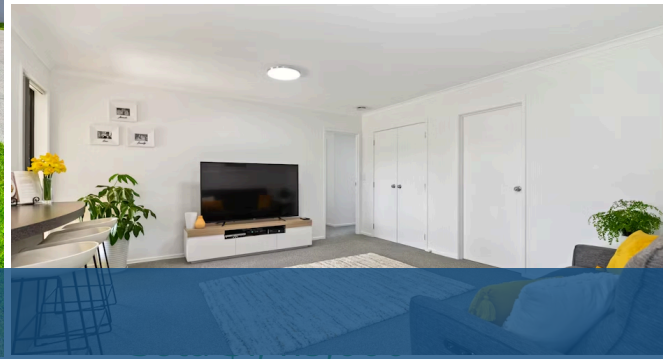




Sold



1 Cleeve Close, Huntington

To download the property files please copy and paste the below link into your browser:

<https://www.propertyfiles.co.nz/property/592720001>



| | |
|------------|--------------------|
| Land area | 612 m ² |
| Floor size | 190 m ² |
| Rates | \$3,802.00 |

Immaculately presented, built for all seasons, and superbly located, this north Huntington home is ready to embrace a family. Brick construction, fresh paintwork inside and out and new carpet give peace of mind living for the years ahead. The mix of room configurations makes the home socially adept but with ample private retreats for quiet rest. Flanked by living areas, the central kitchen allows cooks to stay connected to everyday life. All new appliances, including a self-cleaning oven, enhance functionality while the servery window onto the deck makes hosting duties easy. Swathes of glazing in the large living area invite sun and street views inside. The second living area gives a family plenty of room to spread. All bedrooms have fitted storage systems. A walk-in robe, en-suite and heat pump make the master a relaxing sanctuary. A spa bath adds a touch of luxury to the main bathroom. Kitchen and bathrooms sit on tiled, easy-care floors, while the automated internal access garage, like the rest of the home, is newly carpeted. There's a heatpump in the family living room, HRV for ventilation, generous storage throughout, including in the large laundry, and the bonus of three toilets. Covered and open alfresco areas create a relaxed vibe, ideal for entertaining, and the well-groomed and elevated 612sqm corner section is fully fenced, with big lawn areas and good privacy. In a location sought for its school zones, urban amenities, and links to transit routes, this property has it all!



Call Melissa Wilton for your appointment to view on 021 157 3459.

Melissa Wilton

📞 07 853 0013

📱 021 157 3459

✉️ melissa.wilton@lugtons.co.nz

www.lugtons.co.nz - Licensed under the REAA 2008

