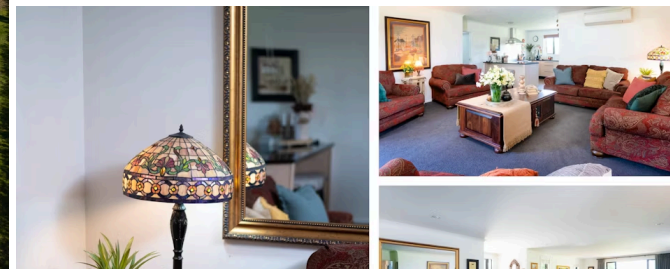




Sold



2006 Kakamea Road, Ngahinapouri

A picture-perfect environment for ultimate lifestyle living, this immaculate 5000m² property leaves everyone green with envy. A glorious example of modern architecture and landscaped gardens, the park-like property is an inspiration and delight. Built in 2013, the double-glazed Downey Designer home has a deep connection with nature, takes indoor-outdoor living to the next level and invests heavily in a family's well-being. Beautifully groomed garden areas add useable space to the home and entice the family outdoors to relax and entertain. Some unique features individualise the property, including a covered portico, custom-designed barbecue area and a waterfall. A large kitchen, scullery and pantry make hosting duties easy, and the open-plan domain is a multi-functional space with a social orientation. Three double bedrooms are restful personal sanctuaries while the master retreat has a walk-in robe and ensuite. The grounds give a nod to sustainable living, with greenhouse and veggie gardens, a high-end chicken coop, and sheds in support. Part of the friendly rural community of Ngahinapouri, the property is just over 10 minutes from Dinsdale and Glenview. To download the property files please copy and paste the following link into your browser;

<https://www.propertyfiles.co.nz/property/kakamea2006>

 3  1  2 

Land area	5000 m ²
Floor size	185 m ²
Rateable value	\$875,000
Rates	\$2,609.00

