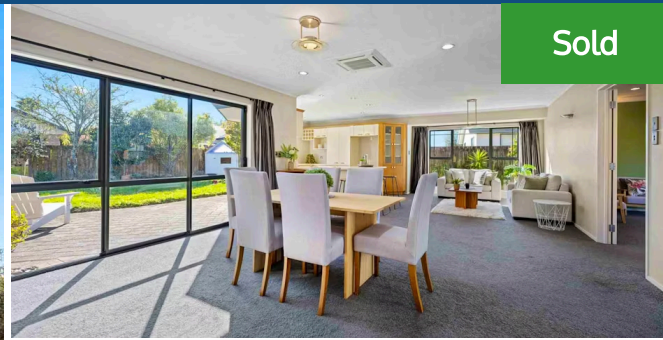




6 Magellan Rise, Flagstaff



Sold



4 2 2

This beautiful single level property provides you with an exceptional opportunity to own a spacious brick home situated in a sought-after location - where style, comfort and convenience come together in perfect harmony. The home boasts a well-designed floorplan with an open plan kitchen, dining and living area, a formal lounge and four bedrooms - including a large master bedroom with ensuite bathroom. The spacious living area opens out into a large north-facing sunny garden, so there is ample room for family entertaining, friends and pets. Situated on a full section of 760 sqm, this home is ideal for families looking for plenty of space to call their own. The property is conveniently located within walking distance to Endeavour Primary School and cycling distance to Rototuna Junior & Senior High schools, making it an excellent choice for families with children. Take advantage of the scenic walking trails around Flagstaff with an entrance just a two minute walk from your driveway. If you wish to view, please contact Nick Baldwin 021 810 228 or Howard "Dobbo" Dobson 021 995 906. To view the property files, please click on the link below:

<https://propertyfiles.co.nz/property/746270003>

Land area	760 m ²
Floor size	230 m ²
Rates	\$4,081.49



Howard "Dobbo" Dobson

☎ 07 855 0550

📱 021 995 906

✉ dobbo.dobson@lugtons.co.nz



Nick Baldwin

☎ 07 855 0550

📱 021 810 228

✉ nick.baldwin@lugtons.co.nz