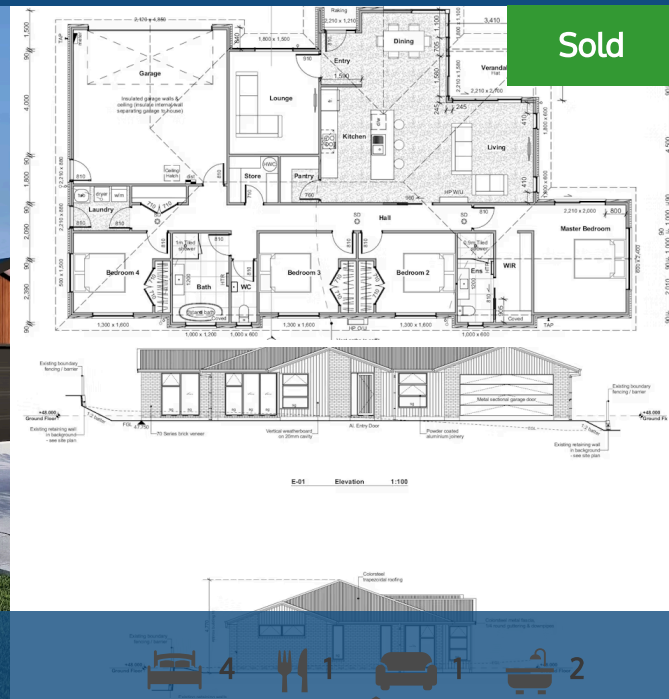




📍 133 Fairway Drive, Morrinsville

10% Deposit/Turn Key Package!

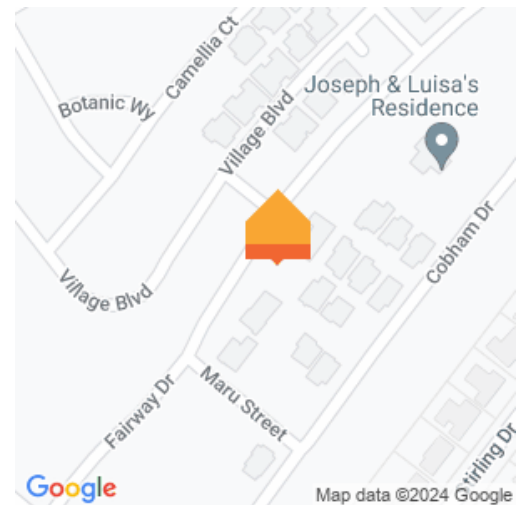


Land area

662 m<sup>2</sup>

Are you looking to climb the property ladder and make a move while you can on your dream home? The time is now. Lock in a fixed price for this spectacular property in the esteemed Lockerbie Estate today and start construction right away. The property itself offers the following features:

- Double-glazed joinery
- Polished concrete flooring
- Walk in wardrobe
- Concrete driveway and footpaths
- Seeded lawn
- Landscaping
- Brick letterbox
- Concrete Patio
- Fujitsu heatpump
- Stone bench tops
- Subway tile splashback
- Entrance door touchpad
- Boundary fencing
- Portico



At this value you will need to get in quick, get in touch with Fraser today for more information.



Fraser Kilgour

☎ 07 838 3800

📱 027 346 4118

✉ [fraser.kilgour@lugtons.co.nz](mailto:fraser.kilgour@lugtons.co.nz)