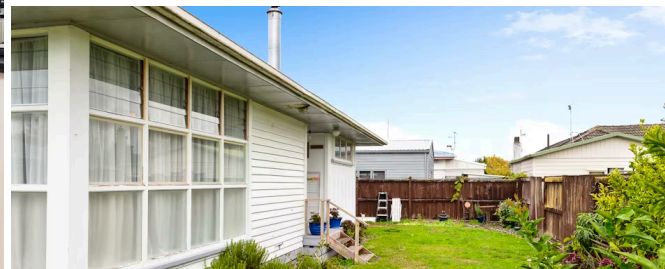




Sold



5A Roy Street, Nawton

2 1 1

Looking for a two-bedroom home? You're going to want to check this one out. Built in the 1950s and moved on site in the 1990s, this home is a ripper. Renovated throughout, with only the 1990s bathroom left to do, native timber flooring glows in the kitchen, dining and living areas, while the bedrooms and hall are carpeted. The kitchen is new, and a fresh colour palette flows through the home, with tasteful, quality custom drapes and roman blinds. A potbelly sits in the lounge, and the woodshed is stocked to fire up this winter. It has a new colorsteel roof, repaired and painted timber windows, and all that's left is to paint the weatherboards your choice of colour. The dwelling sits on an approx. 440m² private, fully fenced rear site, and includes a 1.5 car garage with power for your workshop or hobby spot. Established fruit trees will see you enjoying your own produce, and there's plenty of room for a vege plot. Grapes, dwarf peaches, a mandarin, feijoas and lemons will get the creative in you going . . . peach crumble, feijoa wine and limoncello for that after-dinner tippie. Our vendor is downsizing and ready to go, so check it out to avoid

disappointment. As time slots are limited, book your viewing today with Jeff 027 210 4465.

Floor size	106 m ²
Rateable value	\$350,000
Rates	\$2,017.71

