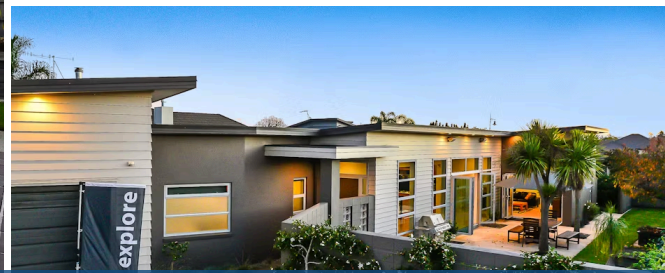




Sold



## 11 Gibbston Close, Huntington

Your custom-built 327sqm family residence greets you with an uplifting sense of light and space, its majority double glazed. The inspired design, which harmonises with the section's contour, delivers separate wings for parents and children in a cleverly conceived layout that appeals to a family at all stages of life. A light-filled open plan living pavilion forms the hub of the home. This convivial area has comfortably hosted up to 40 guests. Children's and parents' wings radiate off your central pavilion which sits on an easy-care laminated floor, has courtyards on both flanks and a series of stacker doors that invite the summer breeze indoors. Your centrepiece entertainer's kitchen features a five burner gas hob set in a stainless steel linen bench, 1. 5 wall ovens, soft close cabinetry, built-in water filtration, and a well-organised walk-in pantry accommodating both a wine fridge and wine racks. Large platters can be washed in the super-sized sink set in the up lit engineered stone island. A formal lounge/media room and hi-fi music system extend your entertaining scope. Your spacious master retreat nestles in a peaceful, private niche. It has a walk-in robe with built-in storage and a luxurious ensuite. Both the ensuite and main bathroom are tiled, have easy-care walk-in showers and underfloor heating. The spa bath is a further enhancement. The east wing is a comprehensive offering comprising an office, three double bedrooms, a separate laundry, and large versatile lounge with a kitchenette and private entry. All rooms extend off a wide hallway. Matching laundry and kitchen are beautifully themed. Shelving is available in the double garage and hot water is gas infinity. The landscaped 853sqm grounds are screened from neighbours and provide a picturesque frame to your home, which delivers architectural creativity, fine appointments and great indoor-outdoor entertainment areas.



Land area	853 m <sup>2</sup>
Floor size	327 m <sup>2</sup>
Rateable value	\$850,000
Rates	\$4,053.59



### Wei Sen Chow

☎ 07 838 3800

📞 027 455 4477

✉ [weisen.chow@lugtons.co.nz](mailto:weisen.chow@lugtons.co.nz)

🌐 <https://www.weisenchow.co.nz/>