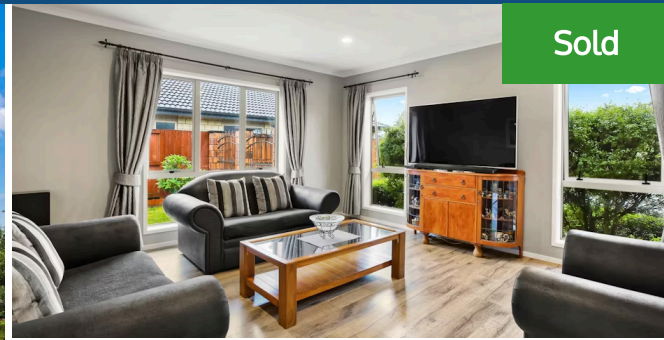




## 19 Whitney Place, Rototuna

**Sold**

4 bedrooms 2 cars 2 bathrooms

There is a lot more on offer here than just triple garaging, but what a great start. A generous brick and tile home with four double bedrooms in popular Rototuna cul-de-sac. Excellent school zones and a network of walk/cycle trails just down the road for the family to enjoy. Two separate living areas with an easy flow to the private, well fenced 708m<sup>2</sup> section ideal for both pets and children. Enjoying double glazing and a choice of three heat pumps and gas conveniences for year-round comfort. Why build when it's all right here ready to move into with motivated vendors who have already purchased. Do yourself a favour and secure this appealing home for 2022. Call one of the team for a viewing today. Deadline sale 12th January 2022 at 3pm (may be sold prior).

Land area	708 m <sup>2</sup>
Floor size	202 m <sup>2</sup>
Rates	\$3,980.00



### Terry Ryan

07 855 0550

021 909 978

terry.ryan@lugtons.co.nz

<http://www.terryryan.co.nz/>

