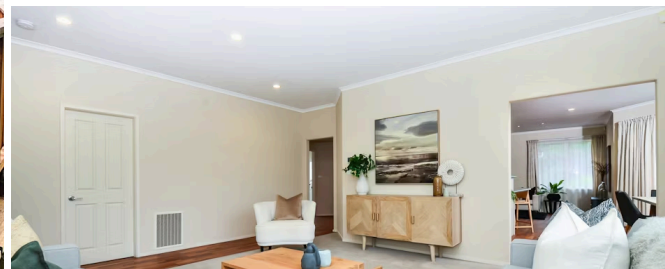




📍 18B Stoneleigh Drive, Chartwell

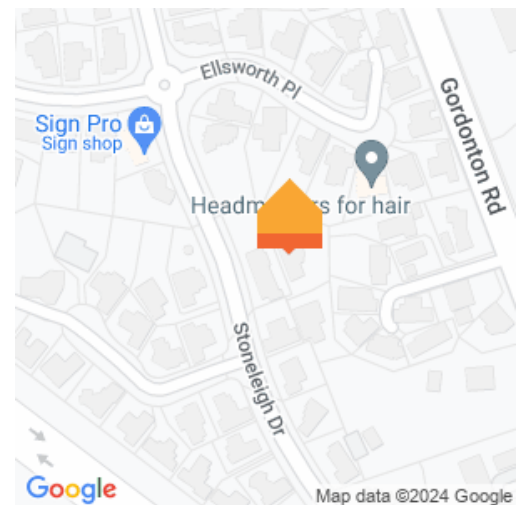


🛏 4 🚗 2 🚿 2 🏠

****OPEN HOMES WEEKEND OF MARCH 6/7 CANCELLED****

The sheer size of this property will delight, the monster 1325m2 contoured section, with gardens, peppered with fruit trees and full of bird life that can be enjoyed from extensive decking, diffusing the barrier between outdoors and in. With one owner since 2007, this is an opportunity to live big. Extended families and those who entertain will love the 2.7m stud ceilings that give the two huge living spaces even more airiness, and clever design from Platinum Homes maximises the usable space in this home. The well appointed kitchen serves as a family hub, separating those living spaces. There are four bedrooms to retire to include the oversized master suite with walk in robe and ensuite, which sits privately away from the other 3 double rooms which have their own family bathroom to share. Gas central heating throughout and underfloor heating in the bathrooms will be welcome in winter, however in summer you'll want to throw the doors open to the deck with its north and east facing aspect to enjoy the sunshine. Storage is taken care of with a large attic storage space above the garage and another large storage with a roof under the deck. Throw the school zones in, proximity to the Greenhill Shops, easy access to Pardoia Boulevard and the Expressway and you have a fine family home with amazing spaces to make your own. For an information pack copy and paste the below link on your web browser

Land area	1325 m ²
Floor size	206 m ²
Rates	\$3,891.00



<https://www.propertyfiles.co.nz/property/stoneleigh18b>