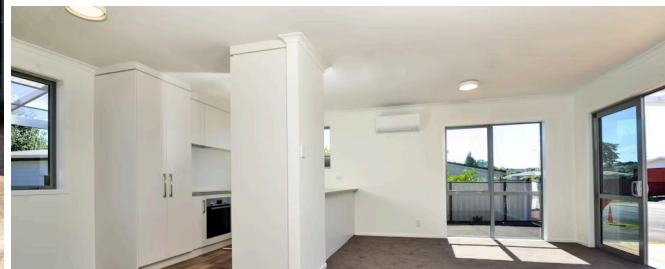




Sold



📍 23 Jasmine Avenue, Dinsdale

🛏 3 🚗 1 🚿 1 🏠

Welcome to 23 Jasmine Ave in the heart of Dinsdale. This 3 bed home with 1.5 garage and double carport on a large sunny corner site of 631 square meters of land is ready for your inspection. Over the last year it has been completely renovated from top to toe to include:

Land area	631 m ²
Rateable value	\$460,000
Rates	\$2,584.65

Double Glazing

New front and back doors

New weatherboards

New kitchen and appliances

New bathroom

Fresh paint and floor coverings

Wardrobes have been updated with new tracks and shelving

Hot water cylinder replaced

LED lighting

Heatpump

A garden overhaul to include privacy fencing new decks and fresh planting. This home has had a makeover that is of top quality. Now looking for a new family to come and enjoy the home and settle into the new year with a completely fresh start. The list goes on, call me today to make an appointment to view and come and see for yourself 23 Jasmine Avenue and picture yourself owning this great home. For an information pack copy and paste the below link on your web browser

<https://www.propertyfiles.co.nz/property/635640002>





Tina Cuthers

☎ 07 838 3800

📱 021 959 915

✉ tina.cuthers@lugtons.co.nz